

**CITY PROSPERITY INDEX**  
***STREET CONNECTIVITY ANALYSIS***

# STREET CONNECTIVITY

Average values for the Urban Footprint

## OBSERVED VALUES

min 6 12 80.0  
 max 30 28 180.0  
 target 20 130

## STANDARDIZED VALUES

## INDEX

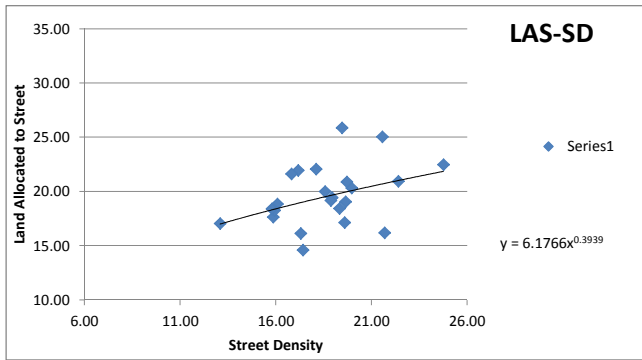
Country	City	LAS	SD	ID	LAS	SD	ID	SCI
Colombia	Valledupar	25.89	19.45	131.61	82.88	93.13	96.78	90.93
Mexico	Corregidora	24.90	18.45	120.49	78.75	80.63	80.98	80.12
Mexico	Queretaro	24.25	16.98	121.42	76.04	62.25	82.84	73.71
Saudi Arabia	Arar (Araar)	29.27	16.03	115.42	96.96	50.38	70.84	72.72
Mexico	Zapopan	23.21	17.08	116.30	71.71	63.50	72.60	69.27
Colombia	Barranquilla	20.34	19.96	156.10	59.75	99.50	47.80	69.02
Colombia	Cúcuta	17.16	19.59	152.50	46.50	94.88	55.00	65.46
Saudi Arabia	Taif	22.65	16.70	146.13	69.38	58.75	67.74	65.29
Colombia	Bucaramanga	18.46	19.32	155.11	51.92	91.50	49.78	64.40
Colombia	Medellin	22.07	18.09	105.00	66.96	76.13	50.00	64.36
Saudi Arabia	Khamis Mushait (Khamies Mashie)	20.98	15.45	123.04	62.42	43.13	86.08	63.87
Peru	Lima	21.95	17.15	149.69	66.45	64.42	60.62	63.83
Colombia	Pereira	20.90	19.71	163.75	62.08	96.38	32.50	63.65
Saudi Arabia	Riyadh	27.87	15.21	109.60	91.13	40.13	59.20	63.48
Saudi Arabia	Medina	27.19	15.85	153.83	88.29	48.13	52.34	62.92
Saudi Arabia	Jeddah	22.83	14.08	125.71	70.13	26.00	91.42	62.52
Colombia	Villavicencio	18.87	16.07	120.00	53.63	50.88	80.00	61.50
Colombia	Santa Marta	20.02	18.57	160.94	58.42	82.13	38.12	59.55
Saudi Arabia	Ha'il (Hail)	24.49	14.75	110.91	77.04	34.38	61.82	57.75
Colombia	Tunja	19.46	18.94	165.62	56.08	86.75	28.76	57.20
Saudi Arabia	Makkah	23.12	14.98	111.11	71.33	37.25	62.22	56.93
Mexico	Guadalajara	20.93	15.26	110.87	62.21	40.75	61.74	54.90
Colombia	Sincelejo	19.08	19.63	174.17	54.50	95.38	11.66	53.85
Ecuador	Guayaquil	25.04	21.55	191.00	79.35	80.57	0.00	53.31
Ecuador	Quito	17.66	15.86	108.63	48.57	48.27	57.26	51.37
Colombia	Bogotá	18.28	15.93	153.23	51.17	49.13	53.54	51.28
Colombia	Cali	19.20	18.86	173.60	55.00	85.75	12.80	51.18
Colombia	Ibagué	16.14	17.30	160.57	42.25	66.25	38.86	49.12
Colombia	Armenia	21.65	16.81	171.67	65.21	60.13	16.66	47.33
Saudi Arabia	Jizan (Jazan)	22.72	13.71	105.45	69.67	21.38	50.90	47.31
Colombia	Pasto	20.96	22.39	207.06	62.33	70.13	0.00	44.15
Saudi Arabia	Tabuk	26.65	14.21	86.67	86.04	27.63	13.34	42.34
Colombia	Montería	16.20	21.68	210.91	42.50	79.00	0.00	40.50
Colombia	Cartagena	14.61	17.41	171.94	35.88	67.63	16.12	39.87
Saudi Arabia	Dammam	23.97	13.38	93.44	74.88	17.25	26.88	39.67
Colombia	Neiva	22.50	24.75	243.75	68.75	40.63	0.00	36.46
Brazil	Fortaleza	18.43	15.79	204.07	51.79	47.40	0.00	33.06
Mexico	Cajeme	23.34	13.63	80.07	72.25	20.38	0.14	30.92
Saudi Arabia	Sakaka	21.43	12.57	90.67	64.29	7.13	21.34	30.92
Panama	Panamá City	17.07	13.08	80.67	46.14	13.56	1.33	20.34
Saudi Arabia	Najran	15.00	10.06	53.21	37.50	0.00	0.00	12.50
Saudi Arabia	Al Bahah (Albahaa)	13.98	10.34	59.35	33.25	0.00	0.00	11.08

Average	21.2	16.8	136.8	63.4	55.2	40.7	53.1
min	14.0	10.1	53.2	33.3	0.0	0.0	11.1
max	29.3	24.8	243.8	97.0	99.5	96.8	90.9

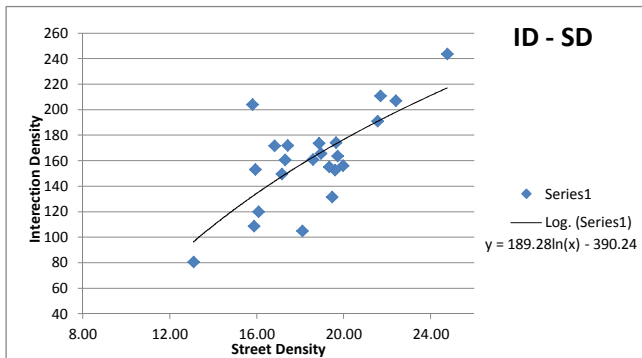
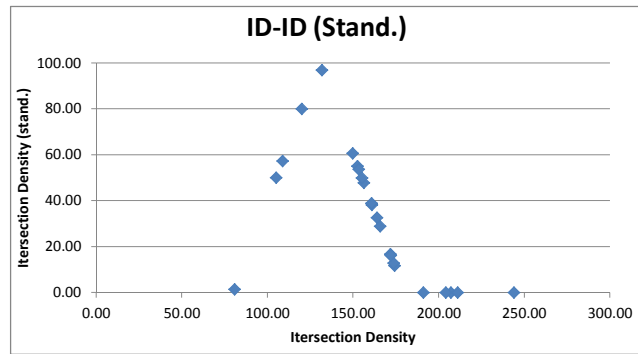
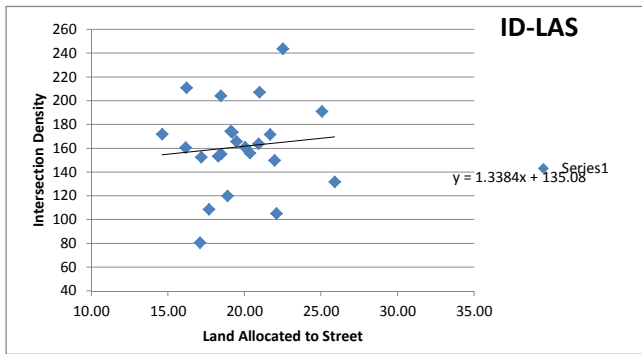
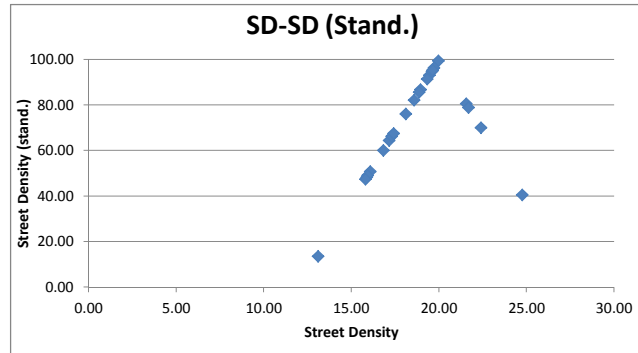
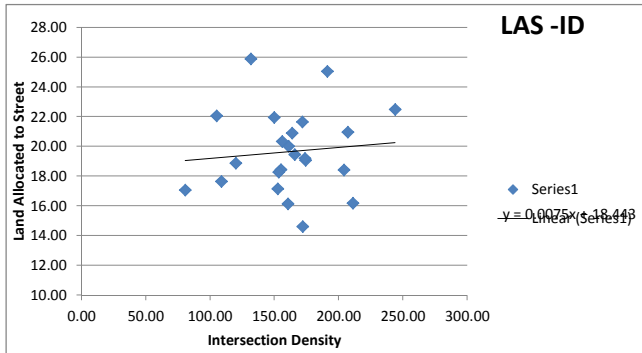
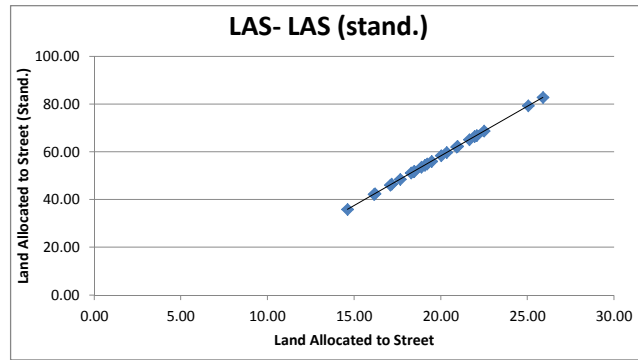
# STREET CONNECTIVITY

Average values for the Urban Footprint  
42 Cities

OBSERVED VALUES



NON STANDARDIZED vs STANDARDIZED VALUES



# STREET CONNECTIVITY

Sample values for Urban Typologies

	Land use/type	LAS	SD	ID
Santa Marta	Center	24.85	20.31	80.00
	Housing project	22.91	19.13	170.00
	Formal	30.59	24.24	190.00
	Informal	16.40	21.71	240.00
	Industrial	18.57	26.84	300.00

Barranquilla	Center	23.61	19.60	90.00
	Housing project	29.33	37.94	510.00
	Formal	34.47	18.75	120.00
	Informal	23.57	26.36	250.00
	Industrial	21.18	12.56	40.00

Bogotá	Center	34.87	22.93	200.00
	Housing project	29.61	19.92	130.00
	Formal	35.01	20.40	130.00
	Informal	18.96	34.25	410.00
	Industrial	19.34	11.54	40.00

Armenia	Center	32.18	26.59	210.00
	Housing project	35.50	35.80	410.00
	Formal	34.20	19.80	160.00
	Informal			
	Industrial	24.72	12.83	110.00

Bucaramanga	Center	35.19	24.92	190.00
	Housing project	19.82	28.73	270.00
	Formal	31.66	23.85	120.00
	Informal	17.27	35.75	570.00
	Industrial	30.79	21.09	140.00

Cali	Center	30.18	22.69	190.00
	Housing project	25.90	34.87	500.00
	Formal	34.23	18.20	110.00
	Informal	13.40	31.29	340.00
	Industrial	15.30	12.34	90.00

Cartagena	Center			
	Housing project			
	Formal	25.21	21.66	170.00
	Informal	18.09	43.53	680.00
	Industrial	11.74	12.67	70.00

Cúcuta	Center	23.88	16.88	70.00
	Housing project	18.55	15.41	80.00
	Formal	24.86	23.12	130.00
	Informal	18.68	25.40	240.00
	Industrial	12.79	9.52	60.00

Ibagué	Center	27.82	18.20	110.00
	Housing project	10.70	18.38	70.00
	Formal	24.30	28.13	360.00
	Informal	19.58	21.86	230.00
	Industrial	2.88	2.58	-

Montería	Center	26.06	20.61	110.00
	Housing project	14.08	24.51	210.00
	Formal	21.27	26.65	180.00
	Informal	10.13	26.93	280.00
	Industrial	28.46	18.15	90.00

Neiva	Center	25.86	20.64	110.00
	Housing project	18.26	32.74	360.00
	Formal	37.22	28.71	230.00
	Informal	22.46	28.56	270.00
	Industrial	15.98	9.74	20.00

	Land use/type	LAS	SD	ID
Pasto	Center	18.06	20.40	110.00
	Housing project			
	Formal	28.73	22.13	200.00
	Informal	24.54	36.40	490.00
	Industrial			

Pereira	Center	23.87	20.14	120.00
	Housing project	15.46	12.33	60.00
	Formal	34.56	31.64	260.00
	Informal	10.76	11.80	120.00
	Industrial	22.71	7.18	0.00

Sincelejo	Center	16.47	19.16	100.00
	Housing project			
	Formal	18.94	26.64	150.00
	Informal	15.63	28.17	260.00
	Industrial	12.80	9.20	50.00

Tunja	Center	15.80	17.14	70.00
	Housing project	15.51	15.78	120.00
	Formal			
	Informal	17.87	27.29	280.00
	Industrial	24.81	17.47	110.00

Valledupar	Center	27.41	20.61	110.00
	Housing project	32.84	24.90	150.00
	Formal	35.14	23.30	140.00
	Informal	30.41	33.47	260.00
	Industrial			

Villavicencio	Center	35.49	22.70	110.00
	Housing project	28.28	28.59	280.00
	Formal	31.47	24.72	190.00
	Informal	10.05	13.63	70.00
	Industrial	8.65	5.33	0.00

Quito	Center	36.30	20.81	130.00
	Housing project	15.38	15.28	110.00
	Formal	36.30	20.81	130.00
	Informal	22.23	31.05	180.00
	Industrial	20.43	13.26	70.00

Guayaquil	Center	35.57	22.80	130.00
	Housing project	21.32	18.53	120.00
	Formal	24.85	20.23	150.00
	Informal	24.20	31.85	260.00
	Industrial	10.79	7.37	20.00

Panama City	Center	31.68	20.47	100.00
	Housing project	35.54	21.12	160.00
	Formal	16.49	14.12	60.00
	Informal	11.13	26.68	260.00
	Industrial	28.28	16.13	110.00

Lima	Center	36.14	22.86	110.00
	Housing project	29.77	28.11	400.00
	Formal	43.80	17.01	90.00
	Informal	23.01	30.34	280.00
	Industrial	23.08	11.53	60.00

Fortaleza	Center	23.31	18.93	250.00
	Housing project	27.76	27.17	350.00
	Formal	25.43	21.74	270.00
	Informal	15.92	20.88	250.00
	Industrial	29.26	15.88	210.00

# STREET CONNECTIVITY

Average of sample values for Urban Typologie

Average Values by typologies	LAS	SD	ID
Urban Average	19.65	18.6	161.37
Center	26.57	19.97	122.73
Housing project	22.33	22.96	223.00
Formal	28.58	21.63	160.91
Informal	17.47	26.69	282.73
Industrial	18.22	12.06	75.71

Difference from Average	LAS	SD	ID
Center	35%	7%	-24%
Housing project	14%	23%	38%
Formal	45%	16%	0%
Informal	-11%	43%	75%
Industrial	-7%	-35%	-53%

Difference from Center	LAS	SD	ID
Housing project	-16%	15%	82%
Formal	8%	8%	31%
Informal	-34%	34%	130%
Industrial	-31%	-40%	-38%

Difference from Formal	LAS	SD	ID
Center	-7%	-8%	-24%
Housing project	-22%	6%	39%
Informal	-39%	23%	76%
Industrial	-36%	-44%	-53%

## STANDARDIZED VALUES

min 6 12 80.0  
 max 30 28 180.0  
 target 20 130

LAS	SD	ID
56.88	82.50	37.26
85.72	99.65	85.45
68.03	62.97	0.00
94.08	79.64	38.18
47.78	16.37	0.00
50.90	0.72	0.00

## INDEX

SCI
58.88
90.28
43.67
70.63
21.38
17.21