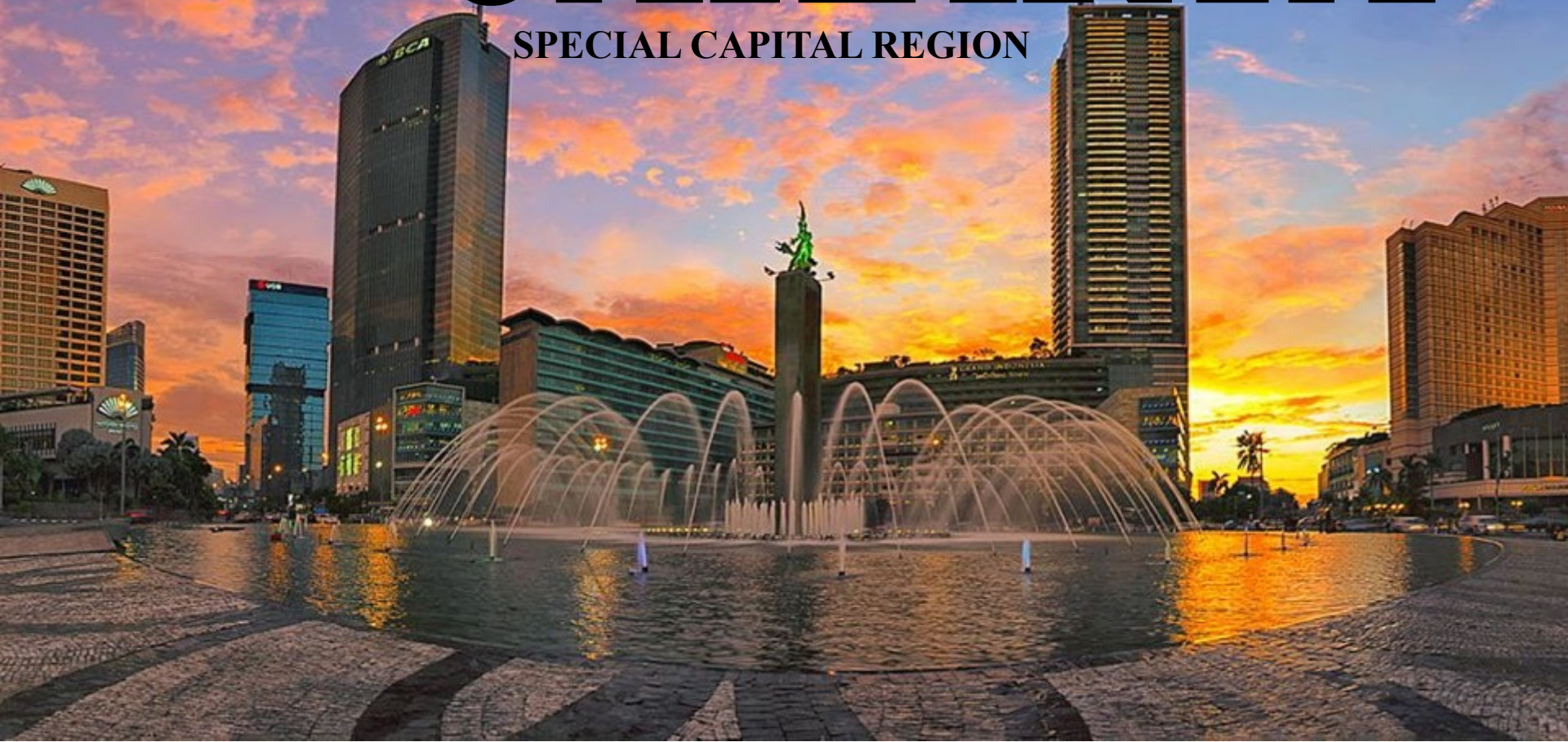


CITY PROSPERITY INDEX

JAKARTA

SPECIAL CAPITAL REGION



**ACTION PLANNING
FOR CITIES**
SUPPORTED BY
THE CITY PROSPERITY INDEX

IUTC, 6 - 13 NOVEMBER 2016

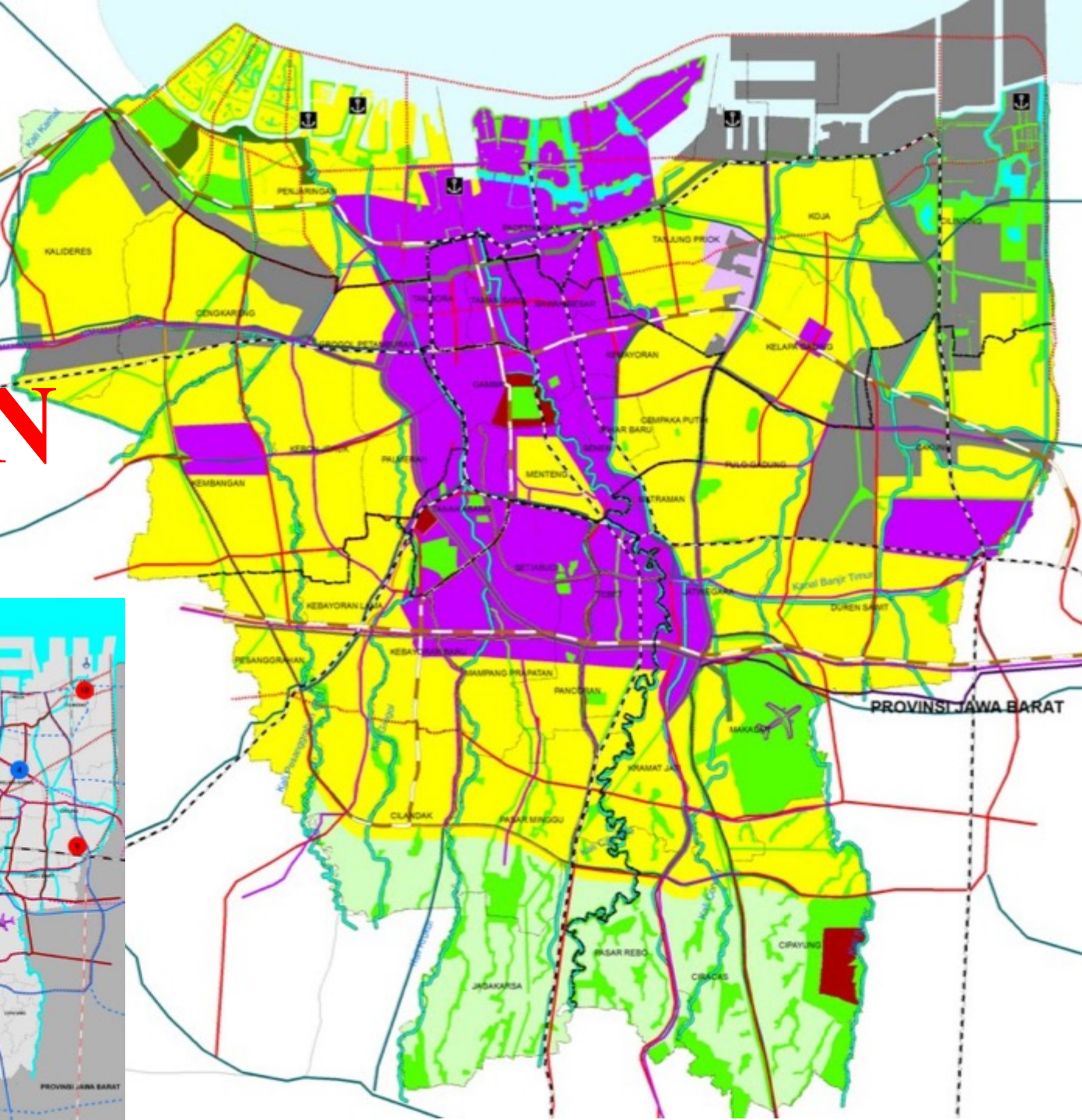
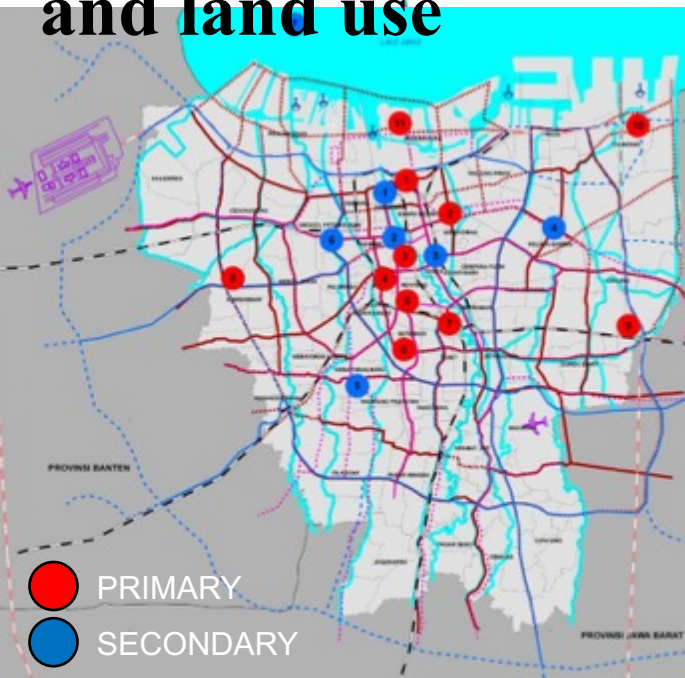
JAKARTA at a glance

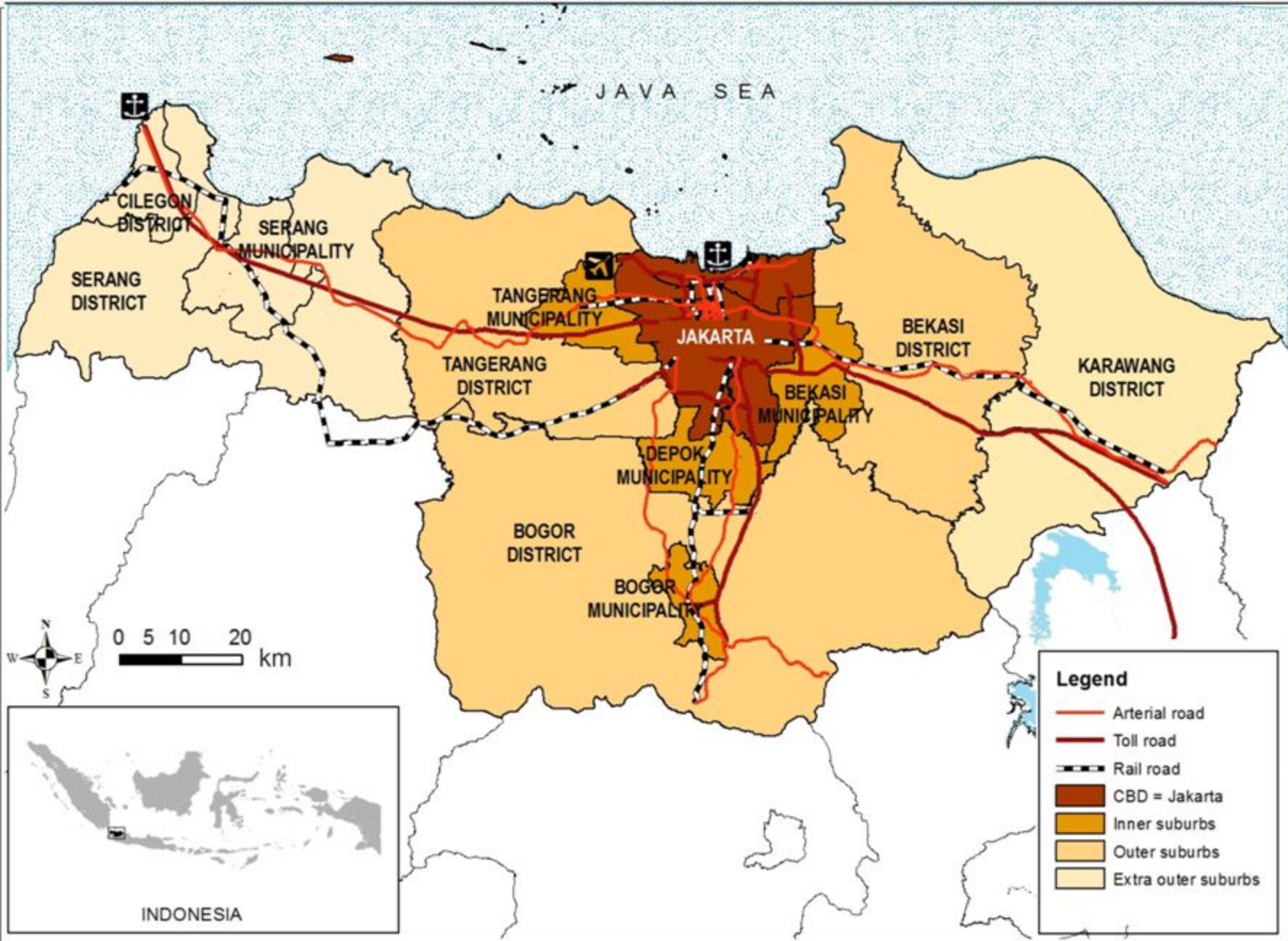
- Special Capital Region
- Area: 662.33 km²
- Population: 10.075.000
- # of Municipality: 5



URBAN

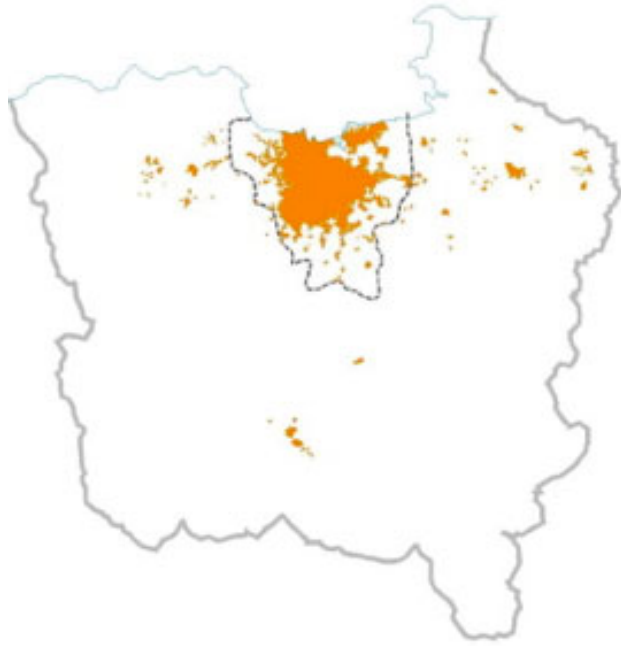
structure
and land use





GREATER JAKARTA

1983






1992



2005



Legend :

-  Jakarta Special Province Boundary
-  Metropolitan Boundary
-  Built-up Area



0 1 2
0 10 20 km

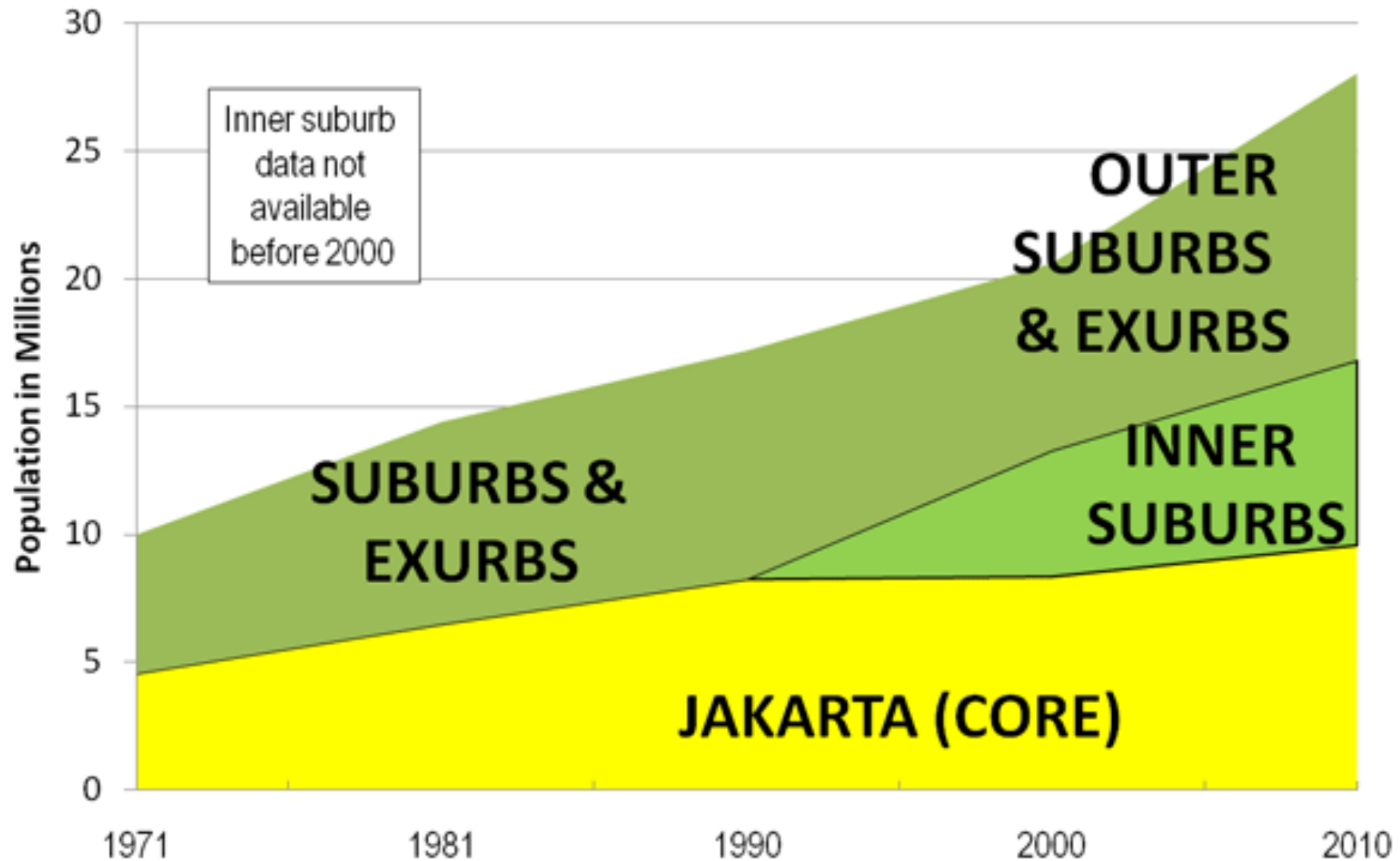
Urban Growth

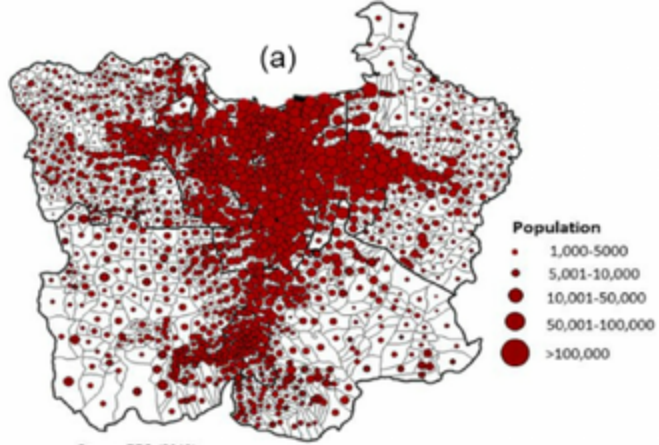
Urban Growth



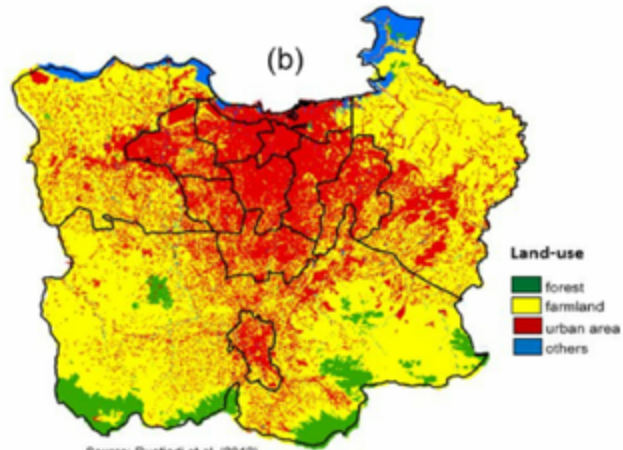
Jabotabek: Population: 1971-2010

CORE & SUBURBAN POPULATION

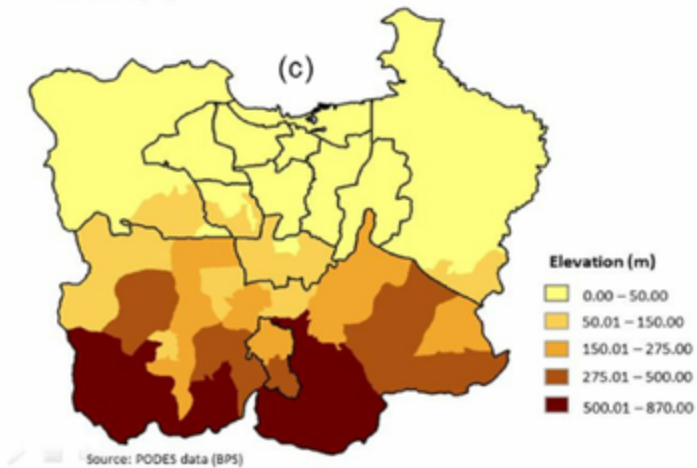




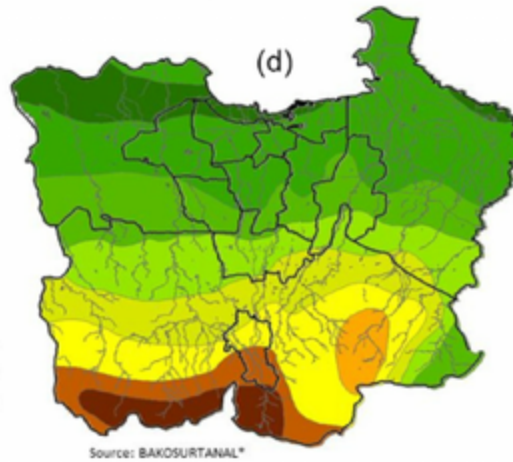
Source: BPS (2010)



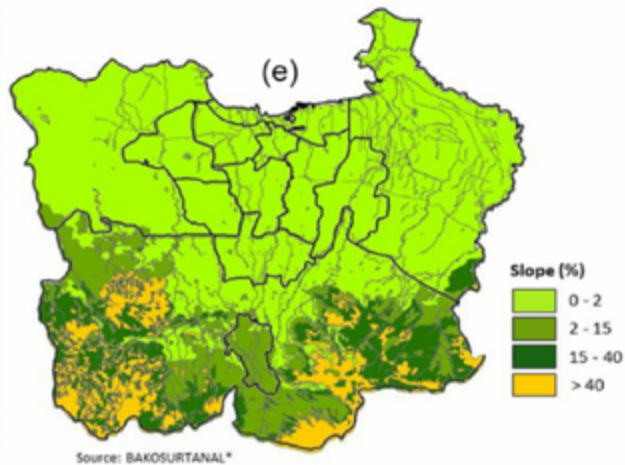
Source: Rustiadi et al. (2012)



Source: PODES data (BPS)



Source: BAKOSURTANAL*



Source: BAKOSURTANAL*

Thematic Maps

Jakarta Region: Population by Sector

2010 CENSUS

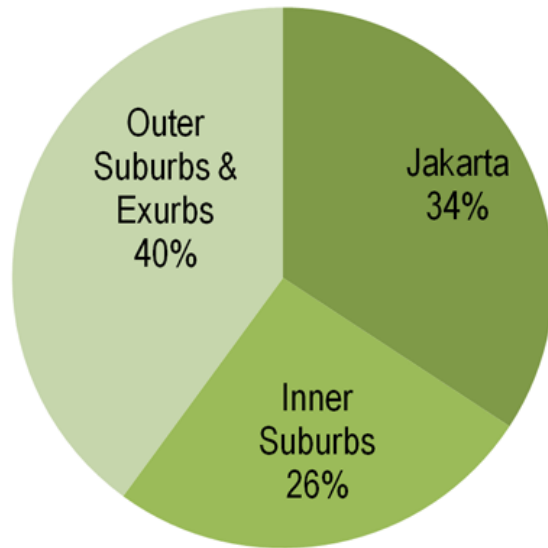


Figure 5

Jakarta Urban Area: Population Density

2010 PRELIMINARY ESTIMATE: METRIC MEASURE

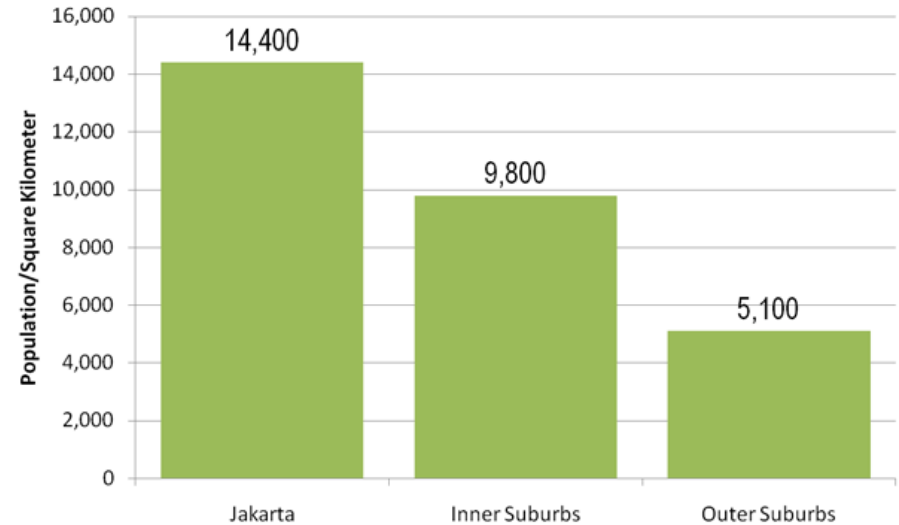


Figure 7

Source: UN Report, 2011

Density: 10 Largest World Urban Areas

POPULATION DENSITY: 2011: METRIC

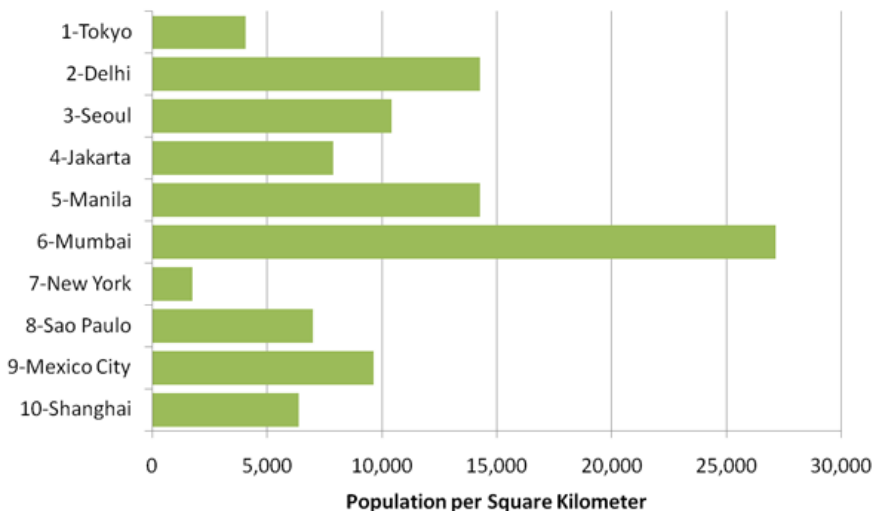


Figure 2

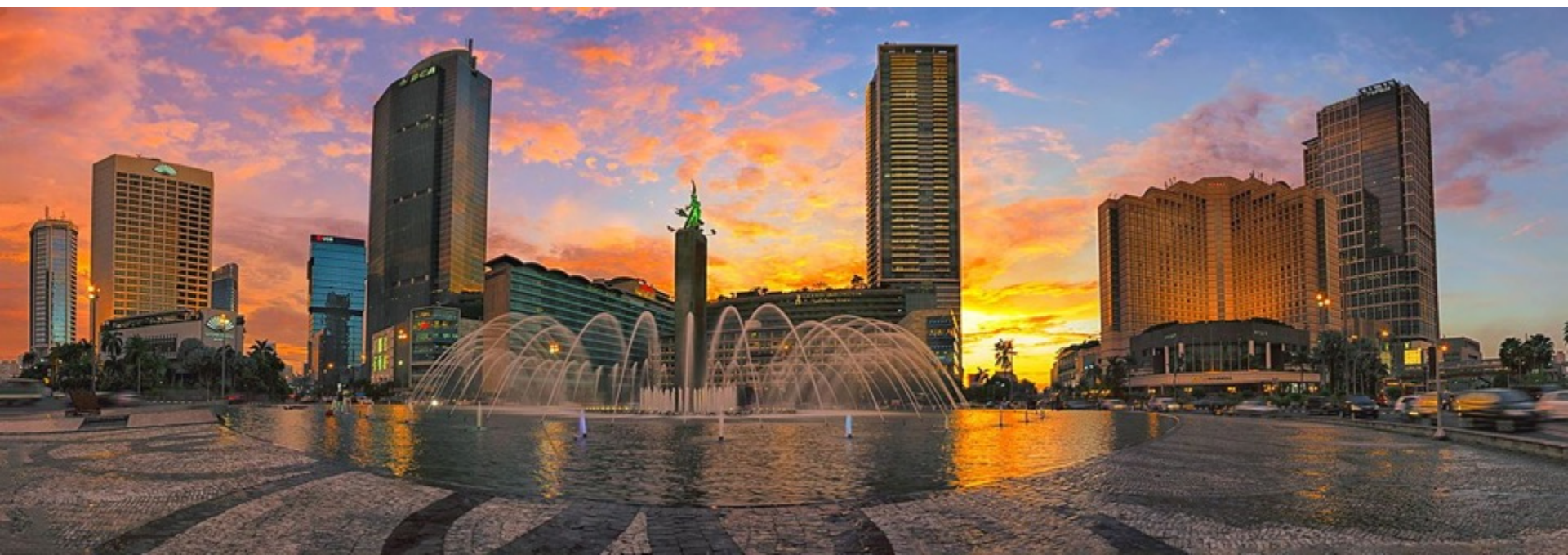
Local Populations and Density

Populasi dan Kepadatan Penduduk

Central Jakarta	: 898,883
Density	: 19,000/km ²
West Jakarta	: 2,278,825
Density	: 18,000/km ²
South Jakarta	: 2,057,080
Density	: 15,000/km ²
East Jakarta	: 2,687,027
Density	: 14,000/km ²
North Jakarta	: 1,645,312
Density	: 11,000/km ²
Thousand Islands	: 21,071
Density	: 2,400/km ²



The Cent



Slum and Squatter



Transportation





Public space

