



Action Plan - Environmental Sustainability Improvement of Malang City - Utilizing City Prosperity Index

Presented By :
Indonesian Participant
(Ashfa Achmad, I Nyomas Suluh Wijaya, Desiana Sinukaban)

Event :
**Action Planning for Cities Oriented by the SDGs 11 and Supported by The City
Prosperity Index
GANGWON, 2nd JUNI 2017**



강원도
GANGWON PROVINCE



International
IUTC
Urban Training Center



OUTLINE :

1

Malang City

2

Key Problem as a CPI Results

3

Goal/Objectives

4

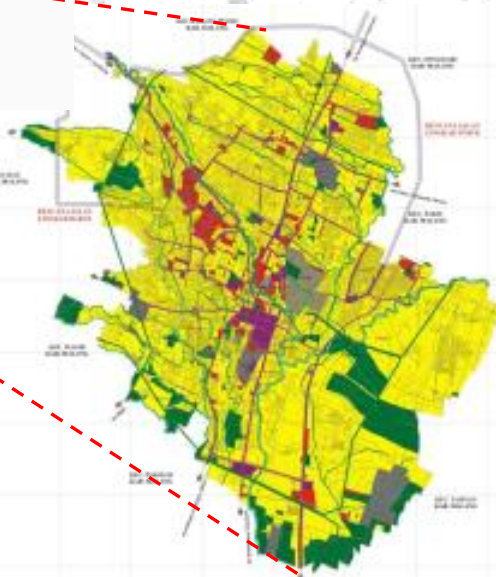
Action Plan

5

Applicability of Using CPI to
Support Malang City Planning

1

MALANG CITY



MALANG CITY



- Malang municipality is second biggest city in East Java Province, named after Surabaya City.
- According to the astronomical location, Malang City lies between 112.06° – 112.07° East Longitude, 7.06° – 8.02° South Latitude
- Total area : 110.06 km^2
- Population : 851. 298 person
- Since 2000s, Malang City is categorized as metropolitan city by the population characteristic
- Regional function of Malang City is center of development for:
 - tourism services
 - international education (3 state universities, 5 private big universities), and
 - local economic creative.
- City income perkapita Rp. 60,881 milion

Source: East Java Provincial Spatial Plan 2011-2031

MALANG CITY *(Continued)*



Land use of Malang City, 2015

Fact of the development by the municipal spatial plan:

1. Boost of economy development (escalates local GDP)
2. Trend of population boost since 2000 (immigrants, temporary residents)
3. Public infrastructure insufficiency
4. Large land conversion for development (→ lack of open green areas)
5. Traffic congestion (ill managed transport)
6. Unfinished problems of high density settlements (tends to be slums area)

MALANG CITY *(Continued)*

Type of urban high density settlements of Malang:

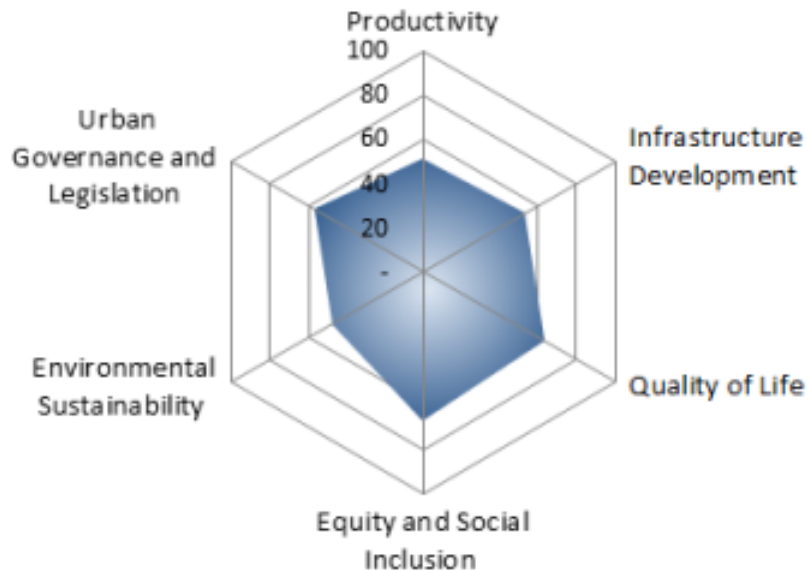
- Density (in average): 562 person/ha
- Located in urban development areas
- Less of Basic urban services
 - ☐ Roads
 - ☐ Footpaths
 - ☐ Water
 - ☐ Drainage
 - ☐ Sanitation
 - ☐ Education Facilities
- Disaster Prone Areas (land slides, fire)

Spread urban high density area of Malang, 2016



Key Problem as a CPI Results

City Prosperity Index
(Last year)



UN-Habitat 2014

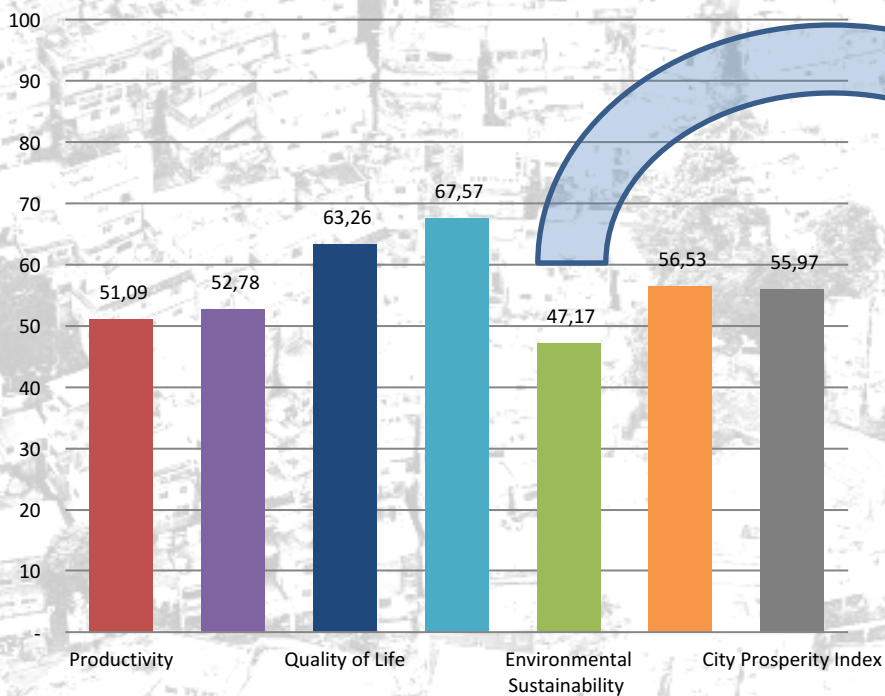
CPI Results

	CPI
Productivity	51.09
Infrastructure Development	52.78
Quality of Life	63.26
Equity and Social Inclusion	67.57
Environmental Sustainability	47.17
Urban Governance and Legislation	56.53
City Prosperity Index	55.97

Source : Statistics Of Malang Municipality, 2016

Key Problem as a CPI Results... *(Continued)*

City Prosperity Index

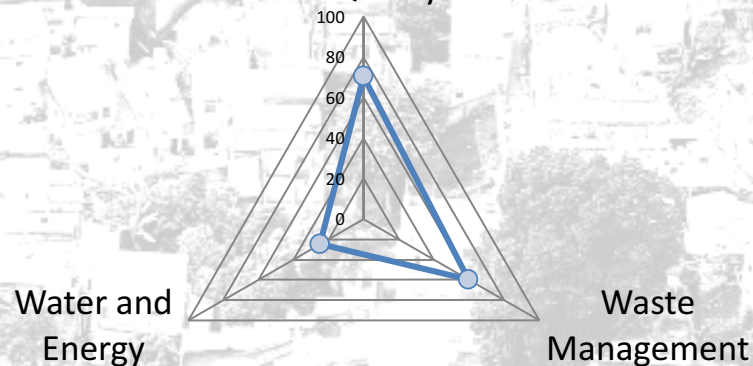


47,17

Environmental Sustainability

Source : Statistics Of Malang Municipality, 2016

Air Quality



Source : Statistics Of Malang Municipality, 2016

2

CPI Results corresponds to the fact of development

Improving the
Environmental
Sustainability by
Empowering the
Community for better
environmental
awareness



Some focused improvements /Goals

- To minimize the occurrence of danger from the environment to health and welfare of human life;
- To improve the health and welfare of human life and to prevent from the danger of disease;
- To realize the availability of solid waste facilities and infrastructure;
- To realize the availability of waste water treatment and infrastructure;
- To increase the coverage of waste services and optimizing waste management;
- To encourage the increasing of healthy lifestyle awareness behavior early on.

Title : Improving the Environmental Sustainability of Malang

Overall goal : To reduce environmental degradation and the impact for citizens and productivity

Activity	Description	Timeline	Responsible by	Resources	Level			Form			Urgent		
					National	Province	Municipal	Financial	System	Capacity Building	Strong	Less	Weak
Specific Obj. 1	Water and Energy		Municipal Department of General Work										
Activity 1	Community education for energy saving and alternatives	2017 - 2027	Mun. Planning Board, Mun. General Work Department, Mun. Environmental Board, Community, Universities & NGO	Mun. Government			✓	✓	✓	✓	✓		
Activity 2	Mapping dan defining water (Drainage and Fresh Water) problems by community	2017 - 2022		Mun. Government + CSR			✓	✓	✓	✓		✓	
Activity 3	Drainage system normalization	2017 - 2022		Central & Mun. Gov.	✓	✓	✓	✓	✓	✓	✓		
Activity 4	Instalation fresh water distribution infrastructure	2017 - 2022		Central & Mun. Gov.			✓	✓	✓	✓	✓		
Activity 5	Mapping potential open green areas expansion(related to building intencity)	2017 - 2022		Mun. Government + CSR	✓	✓	✓	✓	✓	✓	✓		
Activity 6	Low-income housing improvement	2017 - 2027		Mun. Government + CSR		✓	✓	✓	✓	✓	✓		
Activity 7	Community rules development for environmental management	2017 - 2022		Community + CSR			✓			✓		✓	

Action Plan ... *(Continued)*

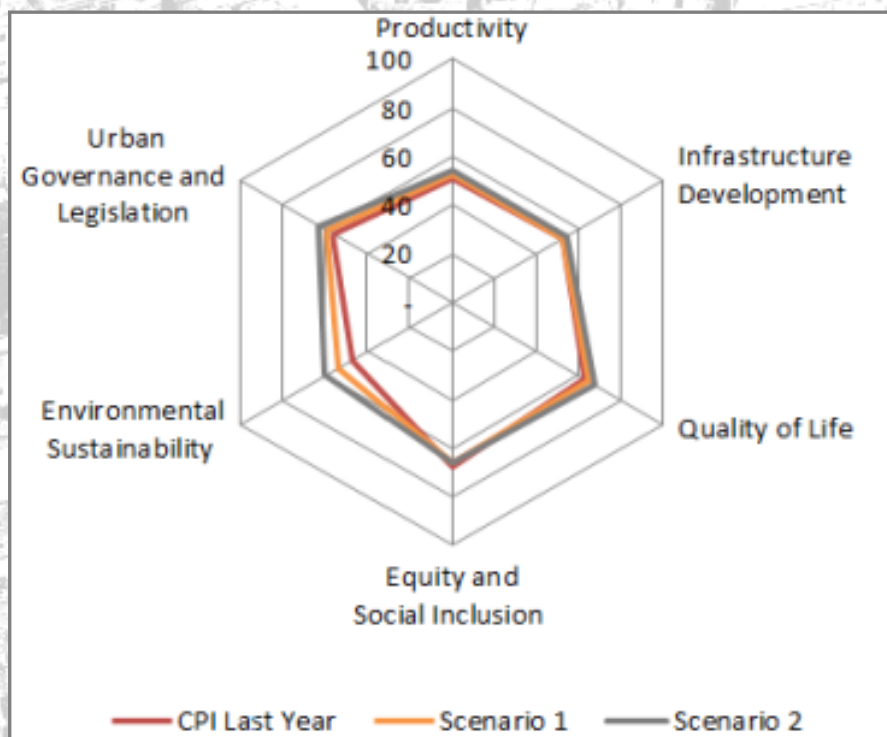
Activity	Description	Timeline	Responsible by	Resources	Level			Form			Urgent		
					National	Province	Municipal	Financial	System	Capacity Building	Strong	Less	Weak
Specific obj. 2	Waste management		Municipal Department of General Work										
Activity 4	Developing local solid waste instalation for recycling	2017 - 2022	Mun. Planning Board, Mun. General Work Department, Mun.	Central & Mun. Government		✓	✓	✓	✓	✓		✓	
Activity 5	Solid waste bank initiation and development	2017 - 2022		Community + CSR			✓			✓		✓	
Activity 6	Community empowerment for green bussiness on waste management	2017 - 2027	Environmental Board, Mun. Board of Investment and Creative Local Economy, Community, Universities & NGO	Mun. Government + CSR			✓		✓	✓	✓		
Activity 7	Improving capacity and quality of City's Dumping Area	2017 - 2027		Mun. Government	✓	✓	✓	✓	✓	✓	✓		
Activity 8	Soft-loan for green bussiness initiation and the development	2017 - 2027		Mun. Government + CSR			✓	✓	✓	✓		✓	

Action Plan ... *(Continued)*

Activity	Description	Timeline	Responsible by	Resources	Level			Form			Urgent		
					National	Province	Municipal	Financial	System	Capacity Building	Strong	Less	Weak
Spesific Obj 3	Air Quality		Municipal Department of General Work										
Activity 1	Community education for urban farming and greening	2017 - 2027	Mun. Planning Board, Mun. General Work Department, Mun. Environmental Board, Mun. Board of Investment and Creative Local Economy, Community, Universities & NGO	Mun. Government + CSR			✓	✓	✓	✓	✓		
Activity 2	Infrastructure development for urban farming	2017 - 2027		Community + CSR			✓			✓		✓	
Activity 3	Mapping potential open green areas expansion (related to building intencity evaluation)	2017 - 2027		Mun. Government			✓	✓	✓	✓	✓		
Activity 4	Public transport campaign	2017 - 2027		Mun. Government + CSR	✓	✓	✓	✓	✓	✓	✓		
Activity 5	Pedestrian line improvement	2017 - 2022		Mun. Government	✓	✓	✓	✓	✓		✓		
Activity 6	Developing city line infrastructure	2022 - 2027		Central & Mun. Government	✓		✓	✓	✓				✓

Action Plan ... *(Continued)*

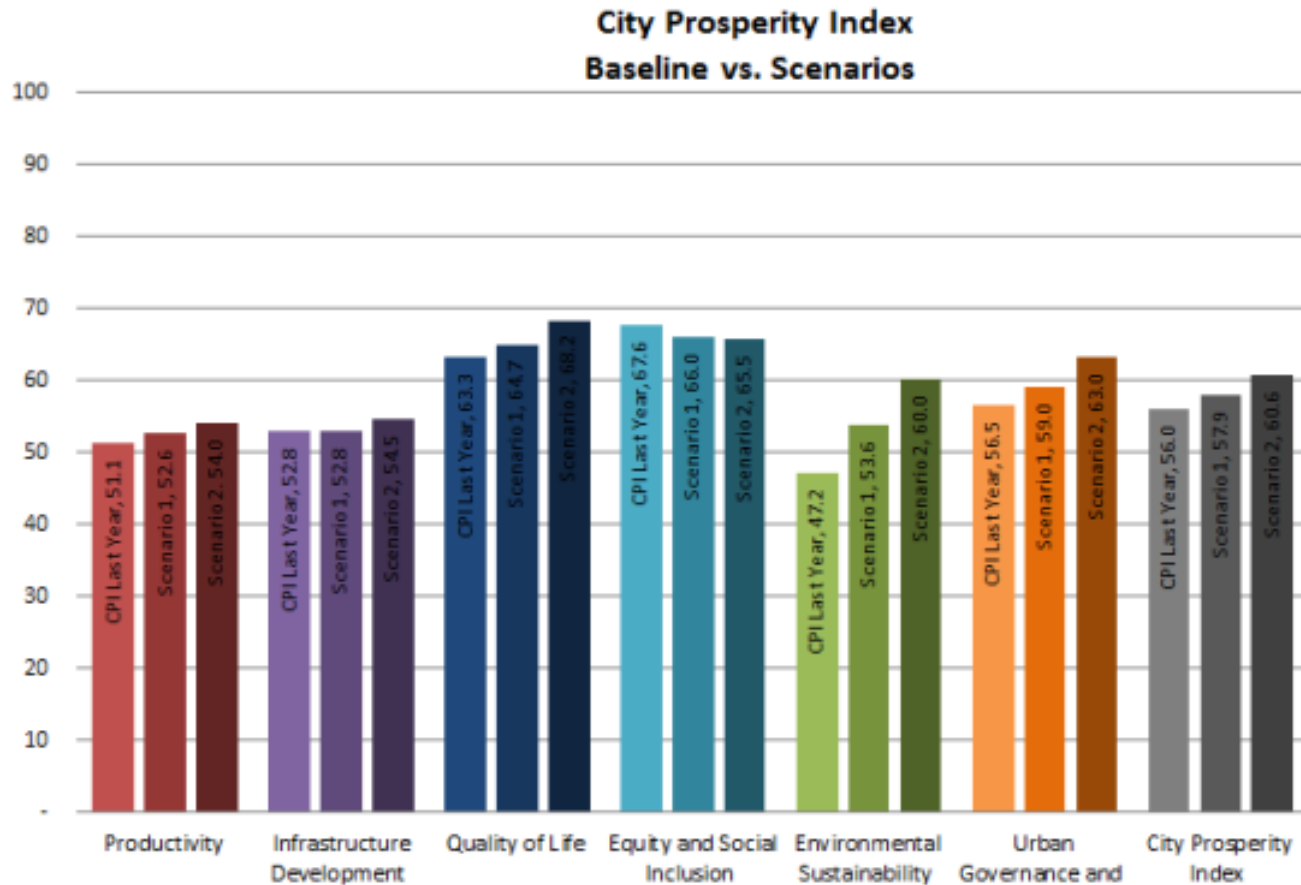
CPI Scenarios



	CPI Last Year	Scenario 1	Scenario 2
Productivity	51.09	52.58	53.96
Infrastructure Development	52.78	52.83	54.48
Quality of Life	63.26	64.70	68.24
Equity and Social Inclusion	67.57	65.98	65.54
Environmental Sustainability	47.17	53.61	59.96
Urban Governance and Legislation	56.53	59.00	63.03
City Prosperity Index	55.97	57.86	60.63

Action Plan ... *(Continued)*

CPI Scenarios



The following graphic presents the City Prosperity Index baseline, and the estimation for two scenarios proposed

Applicability of Using CPI to Support Malang City Planning

- Do you find it useful for your city/your work?
 - **CPI helps in understanding city's recent condition based upon the adequate information → demand in completing city's data base.**
 - **CPI helps in revealing the practical strengths and weakness of the city**
- Do you see any potential to apply CPI in your city?
 - **Yes, CPI provides good benefits for describing the dimensional and sub dimensional performance associated with the realization of sustainable development. For next step, we need a more comprehensive model to apply it in an action plan.**

Applicability of Using CPI to Support Malang City Planning

- What are the financial resources could be mobilized to make it happen?
 - **Financing sources can come from the provincial and municipal governments, and Corporate Social Responsibility (CSR).**

Best Practise

Kampung Jodipan – Kampung Warna

[Video 1](#)



- Located in Brantas Riverbanks
- Local tourism activities for environmental upgrading

Best Practise.....(Continued)

Kampung Glantung – Kampung Go Green



- Located in Purwantoro Sub-district, Blimbing district
- Conservation and education the community activity for upgrading settlement

cảm ơn bạn
Dankie Gracias
Спасибо شكري
Merci Takk
Köszönjük Terima kasih
Grazie Dziękujemy Dèkojame
Ďakujeme Vielen Dank Paldies

감사합니다

感謝您 Obrigado Teşekkür Ederiz
Σας ευχαριστούμε THANK YOU
Боданкы
Bedankt Děkuje vám
ありがとうございます
Tack