

Work Plans for Tier III Indicators

as of 11 November 2016

Goal 1 (Additional Indicators for UN-Habitat)

Target 1.4 By 2030, ensure that all men and women, in particular the poor and the vulnerable, have equal rights to economic resources, as well as access to basic services, ownership and control over land and other forms of property, inheritance, natural resources, appropriate new technology and financial services, including microfinance.

Indicator Number and Name: 1.4.1 Proportion of population living in households with access to basic services.

No metadata and work plan received on current indicator formulation.

Indicator Number and Name: 1.4.2: Proportion of total adult population with secure tenure rights to land, with legally recognized documentation and who perceive their rights to land as secure, by sex and by type of tenure.

Agency: UN Habitat and World Bank

Has work for the development of this indicator begun? Yes

Who are the entities, including national and international experts, directly involved and consulted in developing the methodology/and or data collection tools?

"Methodological Development indicator (including data collection tools): UN Habitat (Eduardo Moreno, Robert Ndugwa, Oumar Sylla); World Bank (Klaus Deininger, Gero Carletto, Thea Hilhorst), Jennifer Witriol (Millennium Challenge Account land impact evaluation expert); regional representatives' national statistical agencies (Africa, Asia, LAC, ECA).

Options for synergies with indicator 5.1a (FAO) and urban (tenure) informality (11 UN Habitat) – will be taken into account.

Consultation: The stakeholders supporting the adoption of this indicator will be consulted on the methodology and data collection. They will play a key role also in ensuring use of findings in country, continental and global level policy dialogue. Additional organizations and networks engaged in consultations are Global Donor working Group on Land (bilateral and multilateral donors like USAID, BMZ, Netherlands, DfID, JICA, IFAD), Global Land Indicators Initiative – Global Land Tool Network (GLII/GTLN – about 70 CSO, NGO, professional organization, research and training organizations (IASS), bilateral and multilateral organizations working on land,), International Land Coalition (ILC – network of CSO, NGO and international organizations working on land), UNEP, and Gallup. In addition, several more specific data collection initiatives are set up by networks and organization in their member countries, categories of people (like indigenous peoples, gender); tenure types (commons/ group rights like land mark, Africa commons index) or issues (forests - RRI, slums, perceptions). The findings will contribute to enriching policy analysis. Through the consultation process, options for standardization in data collection approaches will be encouraged to facilitate comparative analysis and will even contribute to progress on the indicator (tenure regularization in slums; recording of indigenous people rights; gender rights).

Stakeholders' consultation takes place via virtual meetings, reference groups and expert group meetings. "

What is the involvement of or how do you plan to involve National Statistical Systems in the development of the methodology?

National statistical systems are the main source of data for this indicator. Each national (or regional body like UEOMA) will be consulted on including a limited set of standardized questions (legally recognized documentation and perceived tenure security) in already established, nationally representative multi-topic household surveys. Representatives of national statistical systems will be consulted on the methodology.

Please briefly describe the process of developing the methodology for the indicator

"The methodology design work plan will be submitted end of July and lay out the steps for developing, testing and peer reviewing, and capacity building required. Methodology development will already include data collection (administrative data from registries and cadastres; available survey data) to test options for computing and their robustness for different country settings.

Security of Tenure methodology is now developed for Household surveys, and has been piloted in selected countries in the developing regions (LSMS – ISA / 8 countries).

Technical and practical feasibility of the methods proposed for data collection and analysis will include an assessment of how the indicators work in practice (and can be combined with other analytical work), deliver the necessary combinations of quantitative and qualitative information to support understanding and allow the degrees of disaggregation required (methodological feasibility). These results will determine the need for any additional piloting to ensure methodologies and procedures for gathering samples or comprehensive data are sufficiently rigorous and detailed and that statistical methods for data analysis and computation of indicator values over time are sound, consistent and reliable so as to produce significant results in all regions prior to roll out globally."

Please indicate new international standards that will need to be proposed and approved by an intergovernmental process (such as UNSC) for this methodology.

The methodology will be subject to rigorous peer review and published, before being submitted for review to the IAEG –SDG for graduation to tier I; No international standards will need to be developed for this indicator; international agreement on substance will be achieved through the consultation mechanism already in place and that helped propose this indicator, that engage the main stakeholders and networks working on land globally.

When do you expect the methodological work on this indicator to be completed?

The methodological work for this indicator is scheduled for completion in 12 months (October 2017) following approval of approach by IAG-SDG

Are data and metadata already being collected from the National Statistical System for one or more components of this indicator?

Yes

If yes, please describe:

The World Bank and UN Habitat have an archive of household surveys and census produced by national statistical systems. These data sets are analysed for variables of relevance for this indicators and will be used for developing and testing possible computing formula(s) and disaggregation for the indicator and developing meta data (by country for land type). For all upcoming LSMS surveys, the addition or expansion of land questions (in line with indicator 1.4.2) is already taking place as these surveys only take place every 3-5 years. Examples include Ghana, Malawi, Uganda and Zimbabwe, but also UEOMA standard survey). This indicator also uses administrative data produced by cadastres and registries. Collection of data on the number of plots that are mapped and registered in official government systems, total area covered and gender disaggregation has also started and a respondent list for these agencies is being built. The results will also be used for country level meta data (structure of the land information system).

How do you plan to collect the data?

Send questionnaire(s) to country, obtain data directly from country database/website, Joint survey/compilation with national agency and international entity, Satellite images, remote sensing **If the indicator involves multiple components from different data sources, please describe how each individual component of the indicator will be collected here.**

- "• Security of land tenure is a multi-dimensional entity. Due to the different denominators, different tools for measurement and monitoring have to be used. Efficiency of data collection and reducing the burden for national statistical systems and reporting agencies is a key criterion.
- Questions will be added to upcoming national surveys (or census) that are already planned and funded, and integrated and adapted into the existing survey structure, in a way that elicits consistent data across different countries.
- To assist countries, a set of guidelines will be developed and discussed with the national statistical systems. Technical assistance will be made available (possibly through the Rome Data hub (established by FAO, IFAD and World Bank) and Habitat to national statistical systems to support the integration of these questions in existing surveys, enumerator training and facilitate analysis.
- Possibilities for expanding questions in standardized and nationally representative surveys like the DHS will be explored and discussed, which will be important for countries where the survey frequency is relatively low. Questions on land and housing ownership are already included in the DHS since 2015 and options for more granularity will be discussed.
- Options for expanding land related questions in any upcoming census will also be explored. • Administrative data will be derived from national land information systems (cadastres and registries), but the completeness and quality will vary across countries, reason why meta data are important. The quality of administrative is expected to improve in the period up to 2030, (which would imply a larger percentage of the adult population having legally documented rights) and will already be high in for example most OECD countries
- Responsibility for administrative data collection will be with national line ministries or land registries, with methodological support provided through international organizations and regional bodies (e.g. UN-WPLA) to facilitate experience sharing and consistency across countries. Responsibility for household surveys will be with national statistical offices."

With what frequency is data expected to be collected?

Data collection for administrative data will be on an annual basis; Survey data will be available on an annual basis in more developed countries, but frequency will be 3-5 years in several developing countries. Phasing in land questions in all relevant surveys globally will take a few years and requires interest of member states. This frequency will be assessed during methodology development in relation an expected (measurable) change on an annual basis in most countries. Annual reporting is the aim as this is important also for sustaining policy dialogue at the country level. As already indicated, UN Habitat and World Bank will work closely with country and regional statistical agencies and global partners; provide capacity development support for country data collection, analysis and reporting. This work will be supported by the Global Donor Working Group on Land, and other partners collaborating in the GLII platform like for capacity strengthening at regional and country level for data providers and reporting mechanisms; and promoting understanding of this indicator at all levels.

Is there a process of data validation by countries in place or planned for this indicator?

Yes

If yes, please briefly describe:

"UN Habitat and World Bank will facilitate a multi-stakeholder Expert Group Meetings for review and build consensus on methodology and tools for data collection. The publication of the methodology will be subject to a standard peer review.

The aim is that all data used for computing this indicator will be submitted by the national system, like line agencies (registries/ cadasters) and national statistical agencies. In those countries where land tenure security is of greater concern, national policy dialogues will be organized with support of the networks supporting this indicator and its measurements. Local organizations can use these events to submit additional data and information to enrich the analysis and assessment of progress. "

Goal 11

Make cities and human settlements inclusive, safe, resilient and sustainable

Target number: 11.3

Indicator Number and Name: 11.3.2: Proportion of cities with a direct participation structure of civil society in urban planning and management that operate regularly and democratically”

Agency: UN-Habitat

Has work for the development of this work begun? Yes

Who are the entities, including national and international experts, directly involved and consulted in developing the methodology/and or data collection tools?

“UN-Habitat is leading the methodology development of this indicator in close collaboration with several national and international entities as well as experts from selected countries. These include gender units from UN-Women, Gender Unit focal person from selected countries and UNICEF regional offices. Also selected national governments are being consulted and will continue to guide the process towards finalization of this indicator.”

What is the involvement of or how do you plan to involve National Statistical Systems in the development of the methodology?

Selected national statistical offices have been included in the planned expert group meetings that are organized to further development of this indicator. Also several experts will be consulted during the methodological development and selected national statistical systems /offices will be involved during the pilot testing of the methodology and data collection exercises.

Please briefly describe the process of developing the methodology for the indicator

“The major principle behind the development of the methodology for the indicator is to make all efforts capturing and reflecting the vision behind the formulation to indicator and ensuring that the methodological development is highly linked to how data will be collected at country level. In this methodological development, both national and international selected experts will be consulted and UN-Habitat will take the lead on drafting methodological and data collection methods. Several rounds of consultations with many stakeholders have been organized and this includes two high level expert group discussions—one which is virtual and a final one that is face to face”

Please indicate new international standards that will need to be proposed and approved by an intergovernmental process (such as UNSC) for this methodology.

This indicator requires embedding into routine data collection processes, as such the methodology will be pilot tested in selected countries using internationally acceptable standards. The results of this

exercise will ensure that the methodology for guiding and collection of data for this indicator will fulfil international standards.

When do you expect the methodological work on this indicator to be completed?

By August 2017

Are data and metadata already being collected from the National Statistical System for one or more components of this indicator?

No

When do you expect work to begin on developing a methodology and with which partners will your organization work?

The work for the methodology development has already started with developing a detailed calendar of events. The first high level expert group discussion is planned for November 2016 with a final expert group meeting planned for Feb 2017. Other one on one consultation with other agencies is ongoing.

How do you plan to collect the data?

Efforts will be made to collect the data for this indicator from routine national surveys. Hence, data for this indicator will be collected from household surveys and censuses, administrative registries, local governments and electoral offices where applicable.

If the indicator involves multiple components from different data sources, please describe how each individual component of the indicator will be collected here.

Participation will be gauged from various dimensions including disaggregation by gender and ages where applicable. Detailed data on the various forms of participation will hence come from various institutions. Each national government will have the primary responsibility on data collection and validation of this indicator following a programme of capacity strengthening to selected countries to ensure uniformity in the data collection processes globally. Support will be provided to countries where capacity challenges on data collection exist.

With what frequency is data expected to be collected?

Data will be reported every two years.

Is there a process of data validation by countries in place or planned for this indicator?

Yes

If yes, please briefly describe:

Data validation procedures will be fully developed and packaged for training all national statistical systems. As such, all countries collecting data for this indicator will have to follow the strict validation procedures agreed upon internationally. UN-Habitat, will provide the technical support for both data collection and validation, as well as monitor compliance for agreed procedures.

If you have any additional comments that you believe would be helpful to IAEG-SDG members in analysing the work plan and methodological development of the indicator, please provide them here:

“The indicator development processes will be guided by internationally agreed procedures. This may sometimes take longer especially where many partners are involved.”

Target number: 11.4

Indicator Number and Name: 11.4.1 Total expenditure (type of heritage (cultural, natural, mixed, World Heritage Centre designation), level of government (national, regional, and local/municipal), type of expenditure (operating expenditure/investment) and type of private funding (donations in kind, private non-profit sector, sponsorship and private) per capita spent on the preservation, protection and conservation of all cultural and natural heritage, by type

Agency: UNESCO Institute for Statistics

Has work for the development of this indicator begun? Yes

Who are the entities, including national and international experts, directly involved and consulted in developing the methodology/and or data collection tools?

"UIS is convening a meeting of experts for 26-28 September 2016. UIS will be inviting experts from selected international agencies (i.e. UNESCO, UN Habitat, UNEP, Eurostat), NGO's (ICOMOS, IUCN, ICCROM), selected national government ministries and independent experts.

The objectives of the meeting will be to:

- i. Discuss SDG Indicator 11.4.1
- ii. Identify initial methodological issues
- iii. Identify policy priorities and better understand the availability of heritage data
- iv. Identify potential sources of data at national level
- v. Make initial recommendations for a global data collection

It is anticipated that between 15-20 participants will be in attendance. After the meeting, a work plan for the development and implementation of a global data collection will be developed. This will include methodological work."

What is the involvement of or how do you plan to involve National Statistical Systems in the development of the methodology?

Selected experts will be consulted during the methodological development and selected countries will be involved during the pilot questionnaire stage.

Please briefly describe the process of developing the methodology for the indicator

"Expert group in September 2016 will identify initial methodological issues.

UIS will engage an expert to help develop the necessary methodology in collaboration with relevant partners as well as design the data collection instrument. Existing relevant methodologies will be used and new methodology developed as necessary."

When do you expect the methodological work on this indicator to be completed?

December 2017

Are data and metadata already being collected from the National Statistical System for one or more components of this indicator?

Yes

If yes, please describe:

"Population data for all countries are available as well as UN population estimates. UN estimates will be used to calculate the indicator.

Data to produce the indicator (and some of its components) is available for selected countries."

How do you plan to collect the data?

Send questionnaire(s) to country

If the indicator involves multiple components from different data sources, please describe how each individual component of the indicator will be collected here.

Each relevant national respondent will be sent a questionnaire. Consideration is being given to identify a national focal point for each country that would be responsible to coordinate the response to the UIS survey.

With what frequency is data expected to be collected?

Annual

Is there a process of data validation by countries in place or planned for this indicator?

Yes

If yes, please briefly describe:

Validation will be part of the data collection and dissemination process. It is anticipated that countries will validate the indicator(s) prior to release by UIS.

If you have any additional comments that you believe would be helpful to IAEG-SDG members in analysing the work plan and methodological development of the indicator, please provide them here:

The 2009 UNESCO FCS provides the methodological basis for the development of the indicator.

Target number: 11.5

Indicator Number and Name: "11.5.1: Number of deaths, missing persons and persons affected by disaster per 100,000 people"

Agency: UNISDR

Has work for the development of this indicator begun? Yes

Who are the entities, including national and international experts, directly involved and consulted in developing the methodology/and or data collection tools?

"Open-ended intergovernmental expert working group on indicators and terminology (OEIWG) [A/RES/69/284], comprising experts nominated by States, UN agencies and relevant stakeholders, has proposed possible indicators to measure global progress in the implementation of the Sendai Framework. The work of the OEIWG shall be completed by December 2016 and its report submitted to the General Assembly for consideration.

UNISDR, as the Secretariat for the OEIWG, supports deliberation of Member States by producing technical notes addressing critical issues, including feasibility, computation methodology, data availability etc. UNISDR Scientific and Technical Advisory Group (STAG) has provided the OEIWG with technical recommendations.

(Member List: https://www.unisdr.org/files/workspace/7935_stagmembers.pdf)"

What is the involvement of or how do you plan to involve National Statistical Systems in the development of the methodology?

"In most countries national disaster loss databases are established and managed by special purpose agencies including national disaster agencies, civil protection agencies, and meteorological agencies, and disaster data is collected by line ministries.

Therefore, it is essential for national statistical offices (NSOs) to closely collaborate with such agencies and line ministries in charge of targeted data."

Please briefly describe the process of developing the methodology for the indicator

"The proposed indicators were reviewed and examined by other UN agencies and submitted to the IAEG process in early-July 2015. Then in late-July 2015, those indicators were again reviewed by the Expert Group Meeting, organized by UNISDR consisting of more than 60 experts from UN system, scientific and academic organizations, civil sector and private sector and submitted and examined by the Member States in the OEIWG.

So far two sessions of the OEIWG were held, in September 2015 and February 2016, where Member States were deliberating proposed indicators and terminology. Additional consultation was done in June 2016, and is planned for convergence in the work in advance of the third session of the OEIWG in November 2016. UNISDR, as a secretariat for the OEIWG, has supported deliberation of Member States in collaboration with other UN agencies and academia. Related information and documents can be found on the web:

<http://www.preventionweb.net/drr-framework/open-ended-working-group/>"

Please indicate new international standards that will need to be proposed and approved by an intergovernmental process (such as UNSC) for this methodology.

"As the Sendai Framework stipulates, any scales and types of disasters should be addressed.

The methodology proposes the collection and use of simple and uniform physical indicators of mortality (number of people) as the point of departure for computation.

Time dimension should be defined when to record/report data.

Methodologies and standards as well as data for "number of deaths" are very solid and robust. The number of "missing persons" is subject to legal procedures and time threshold, thus it is not consistently collected among Member States.

The number of "persons affected" has same problems as those of "missing persons" but with more complexity. The definition of "persons affected" has not been universal and still under development. The OEIWG is currently discussing sub-categories of "persons affected" taking into account rationality and feasibility. Nevertheless, double-counting is unavoidable in many countries and the value is a proxy, it would provide global trends and measure global progress.

More information can be found in the document prepared for the Second Inter-Sessional Informal consultations of the Chair (20-21 June 2016):

<http://www.preventionweb.net/documents/oiewgTechnical%20Collection%20of%20Concept%20Notes%20on%20Indicators.pdf>

When do you expect the methodological work on this indicator to be completed?

The OEIWG will complete discussion by December 2016

Are data and metadata already being collected from the National Statistical System for one or more components of this indicator?

No

When do you expect work to begin on developing a methodology and with which partners will your organisation work?

"The OEIWG is currently developing indicators to measure global progress in the implementation of the Sendai Framework, which will eventually be SDG indicators.

We closely work with Members of the OEIWG, with which we expect NSO must have synergies and shared responsibilities to collect data."

How do you plan to collect the data?

In the past countries voluntarily provided UNISDR with data and information via online-based. We have established a comparable national disaster loss database, DesInventar.

(http://www.desinventar.net/index_www.html). Although the current coverage exceeds 89 countries, it is expected that by 2020 all countries will build/adjust national disaster loss databases according to the recommendations and guidelines of the OEIWG. We are planning to upgrade national disaster loss database with data collection tools using the latest technologies (cloud based, API) for disaster damage

data at local level, which requires quality control and technical support for across all levels of governments. Ideally the system should use a single entity for the UN system, that can serve multiple purposes and can be used by across UN agencies.

If the indicator involves multiple components from different data sources, please describe how each individual component of the indicator will be collected here.

The national government in each country takes primary responsibility in data collection and reporting in collaboration within and across levels of governments.

With what frequency is data expected to be collected?

Ideally hazard-by-hazard basis, at least annually

Is there a process of data validation by countries in place or planned for this indicator?

Each country takes primary responsibility in his data validation. UNISDR acts as a “clearing house” in charge of technical support, quality control, data aggregation, analysis of trends and patterns, and measurement of progress/reporting.

If you have any additional comments that you believe would be helpful to IAEG-SDG members in analysing the work plan and methodological development of the indicator, please provide them here:

"The proposed methodology and collection is currently under deliberation in the OEIWG. This proposal is mainly based on UNISDR analysis, experience, and knowledge built in the period under the Hyogo Framework for Action (2005-2015).

Not every country has a comparable national disaster loss database that is consistent with the proposed guidelines (although current coverage exceeds 89 countries). Therefore, by 2020, it is expected that all countries will build/adjust national disaster loss databases according to the recommendations and guidelines of the OEIWG."

Target number: 11.5

Indicator Number and Name: "11.5.2: Direct disaster economic loss in relation to global GDP, including disaster damage to critical infrastructure and disruption of basic services"

Agency: UNISDR

Has work for the development of this indicator begun? Yes

Who are the entities, including national and international experts, directly involved and consulted in developing the methodology/and or data collection tools?

"Open-ended intergovernmental expert working group on indicators and terminology (OEIWG) [A/RES/69/284], comprising experts nominated by States, UN agencies and relevant stakeholders, has proposed possible indicators to measure global progress in the implementation of the Sendai Framework. The work of the OEIWG shall be completed by December 2016 and its report submitted to the General Assembly for consideration.

UNISDR, as the Secretariat for the OEIWG, supports deliberation of Member States by producing technical notes addressing critical issues, including feasibility, computation methodology, data availability etc. UNISDR Scientific and Technical Advisory Group (STAG) has provided the OEIWG with technical recommendations.

(Member List: https://www.unisdr.org/files/workspace/7935_stagmembers.pdf)"

What is the involvement of or how do you plan to involve National Statistical Systems in the development of the methodology?

"In most countries national disaster loss databases are established and managed by special purpose agencies including national disaster agencies, civil protection agencies, and meteorological agencies, and disaster data is collected by line ministries.

Therefore, it is essential for national statistical offices (NSOs) to closely collaborate with such agencies and line ministries in charge of targeted data."

Please briefly describe the process of developing the methodology for the indicator

"The proposed indicators were reviewed and examined by other UN agencies and submitted to the IAEG process in early-July 2015. Then in late- July 2015, those indicators were again reviewed by the Expert Group Meeting, organized by UNISDR consisting of more than 60 experts from UN system, scientific and academic organizations, civil sector and private sector and submitted and examined by the Member States in the OEIWG.

So far two sessions of the OEIWG were held, in September 2015 and February 2016, where Member States were deliberating proposed indicators and terminology. Additional consultation was done in June 2016, and is planned for convergence in the work in advance of the third session of the OEIWG in November 2016. UNISDR, as a secretariat for the OEIWG, has supported deliberation of Member States in collaboration with other UN agencies and academia. Related information and documents can be found on the web:

<http://www.preventionweb.net/drr-framework/open-ended-working-group/>"

Please indicate new international standards that will need to be proposed and approved by an intergovernmental process (such as UNSC) for this methodology.

"As the Sendai Framework stipulates, any scales and types of disasters should be addressed.

The methodology proposes, whenever possible, the collection and use of simple and uniform physical indicators of damage (counts of assets affected) as the starting point for calculations, instead of requesting countries to directly evaluate the economic value of direct losses. A centralized and common approach to estimate direct economic losses will result in a homogeneous and consistent indicator.

Time dimension should be defined when to record/report data.

The OEIWG is currently discussing sub-categories of "direct disaster economic loss" taking into account rationality and feasibility among Member States. Although there is great variation in physical and economical situations and data availability among Member States, the value would provide global trends and measure global progress.

"Critical infrastructure" and "basic services" needs to be defined, taking into account data availability and feasibility in most countries.

There are several dimensions of "disruption", i.e. complete/partial interruption and level of service, which needs to be defined.

Although there is great variation in physical and economical situations and data availability among Member States, the indicators would provide global trends and measure global progress.

More information can be found in the document prepared for the Second Inter-Sessional Informal consultations of the Chair (20-21 June 2016):

<http://www.preventionweb.net/documents/oiewg/Technical%20Collection%20of%20Concept%20Notes%20on%20Indicators.pdf>

When do you expect the methodological work on this indicator to be completed?

The OEIWG will complete discussion by December 2016

Are data and metadata already being collected from the National Statistical System for one or more components of this indicator?

No

When do you expect work to begin on developing a methodology and with which partners will your organisation work?

"The OEIWG is currently developing indicators to measure global progress in the implementation of the Sendai Framework, which will eventually be SDG indicators.

We closely work with Members of the OEIWG, with which we expect NSO must have synergies and shared responsibilities to collect data."

How do you plan to collect the data?

In the past countries voluntarily provided UNISDR with data and information via online-based. We have established a comparable national disaster loss database, DesInventar.

(http://www.desinventar.net/index_www.html). Although the current coverage exceeds 89 countries, it is expected that by 2020 all countries will build/adjust national disaster loss databases according to the recommendations and guidelines of the OEIWG. We are planning to upgrade national disaster loss database with data collection tools using the latest technologies (cloud based, API) for disaster damage data at local level, which requires quality control and technical support for across all levels of governments. Ideally the system should use a single entity for the UN system, that can serve multiple purposes and can be used by across UN agencies.

If the indicator involves multiple components from different data sources, please describe how each individual component of the indicator will be collected here.

The national government in each country takes primary responsibility in data collection and reporting in collaboration within and across levels of governments.

With what frequency is data expected to be collected?

Ideally hazard-by-hazard basis, at least annually

Is there a process of data validation by countries in place or planned for this indicator?

Each country takes primary responsibility in his data validation. UNISDR acts as a “clearing house” in charge of technical support, quality control, data aggregation, analysis of trends and patterns, and measurement of progress/reporting.

If you have any additional comments that you believe would be helpful to IAEG-SDG members in analysing the work plan and methodological development of the indicator, please provide them here:

"The proposed methodology and collection is currently under deliberation in the OEIWG. This proposal is mainly based on UNISDR analysis, experience, and knowledge built in the period under the Hyogo Framework for Action (2005-2015).

Not every country has a comparable national disaster loss database that is consistent with the proposed guidelines (although current coverage exceeds 89 countries). Therefore, by 2020, it is expected that all countries will build/adjust national disaster loss databases according to the recommendations and guidelines of the OEIWG."

Target number: 11.7

Indicator Number and Name: “11.7.1: Average share of the built-up area of cities that is open space for public use for all, by sex, age and persons with disabilities”

Agency: UN-Habitat

Has work for the development of this work begun? Yes

Who are the entities, including national and international experts, directly involved and consulted in developing the methodology/and or data collection tools?

UN-Habitat will take the lead in global reporting which will follow efforts of directly working with national statistical agencies for reporting at national levels. Un-Habitat and other partners including other private and regional commissions will lead the efforts of building national capacities to monitor and report on this indicator. The following partners will be consulted in the further development of this indicator: UNSDSN, European Commission, New York University, World Bank, UNFPA, UNDESA, ICLEI, DANE, Penn Institute, Tellus Institute, Centre for Livable cities, DANE, ESRI, INEGI, New School-New York, GvSig, ICL, WCCD, Urban Institute, ESA, etc.

What is the involvement of or how do you plan to involve National Statistical Systems in the development of the methodology?

UN-Habitat has a global network of urban observatories who work closely with the National statistical systems in many countries to collect and monitor urban spaces and indicators. These networks will be used to invite member countries to make contributions to the methodology developments. In addition, member states will be consulted through the Inter-Agency and Expert Group (IAEG) on Sustainable Development Goal Indicators. A methodological proposal will be submitted to the IAEG by February 2017, following a planned EGM in late January 2017.

Please briefly describe the process of developing the methodology for the indicator

In this methodological development, both national and international experts will be consulted and UN-Habitat will take the lead on drafting methodological and data collection methods.

"UN-Habitat will organize several expert consultations (virtual and Face-to-Face), in collaboration with several partners involved in the development of this methodology. The consultation will involve representatives from national statistical agencies, independent scholars and representatives of the private sector and the civil society. The consultation will focus on harmonization of definitions. It will also discuss the computation of the proposed indicator. Data collection will refer to the adoption of the approach proposed by the EGMs. The first expert group meeting will be a virtual one and will take place in November 2016, followed by a face-to-face EGM in late January 2017. As a second step, based on the results of the expert meetings, UN-Habitat will take the lead on drafting a proposal in collaboration with key partners that will be submitted to the IAEG before the end of March 2017, in view of a gathering comments and opinions from member countries by mid-2017.

Please indicate new international standards that will need to be proposed and approved by an intergovernmental process (such as UNSC) for this methodology.

This indicator requires setting new international standards and agreeing on concepts prior to global data collection. Definitions such as the 'Built-up area' which is currently defined as that part of a city which is the contiguous area occupied by buildings and other impervious surfaces including the urban vacant areas in and around them but excluding rural areas beyond the urban fringe, will have to be agreed upon. Also the population definition to be applied for this indicator will need international agreement. Currently, the 'population' of a city is defined as the sum of the population in the set of administrative districts that together encompass the 'built-up area' of that 'city' in the year that measurements are taken. The method for computation will also form part of the international standards to be agreed upon. Currently we have proposed the method to estimate the area of public space based on three steps: a) spatial analysis to delimit the built-up area of the city; b) estimation of the total open public space and; c) estimation of the total area allocated to streets.

When do you expect the methodological work on this indicator to be completed?

June 2017

Are data and metadata already being collected from the National Statistical System for one or more components of this indicator?

Yes,

If yes, please describe:

Data for this indicator has been generated for several cities based on secondary data sources that come from the National Statistical Systems and complemented by GIS data from other partner sources (European Commission, GvSig, etc.). Analysis has been done for over 100 cities which form part of the City Prosperity Initiative.

How do you plan to collect the data?

Data for this indicator will come from various sources including Household survey data, GIS data from various partners, land use maps from National statistical systems and city planning departments, and supplementary data will be collected via mobile phone mapping and data collection technologies.

If the indicator involves multiple components from different data sources, please describe how each individual component of the indicator will be collected here.

Each country national government will take responsibility on data collection and validation of this indicator. Efforts will be made not excessively over burden countries through simplifying and sharing the most cost effective way to undertake the data collection.

Household level data will be available from the rosters of many national statistical systems. Additional GIS /maps data will be available from National statistical systems.

GIS data and satellite images with high resolutions will be obtained from other third party agencies such as European space agency, Google, etc.

Land use maps will be obtained from city planning departments. Additional data will be collected using mobile phone based technologies.

With what frequency is data expected to be collected?

Data will likely be collected every 2 years depending on the national statistical calendars of various countries. Household's level survey data will likely be available from every 3-5 years. GIS and land use maps data will be available every two years, while Mobile data collections will happen every two years, with updates in subsequent years.

Is there a process of data validation by countries in place or planned for this indicator?

Yes

If yes, please briefly describe:

Capacity building exercises are planned to take place at regional and at country level. Data will be validated at a country level and the UN-Habitat together with other partners will provide the technical support for both data collection and validation.

If you have any additional comments that you believe would be helpful to IAEG-SDG members in analysing the work plan and methodological development of the indicator, please provide them here:

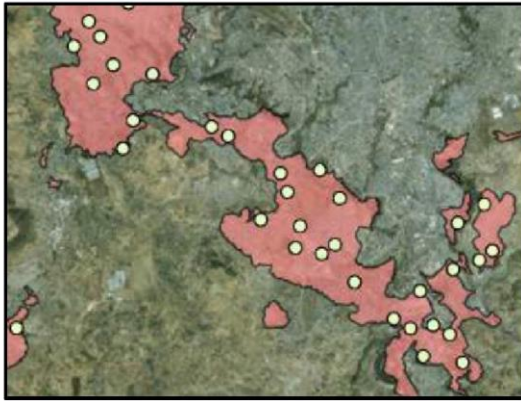
This indicator has been collected for over 100 cities as part of the city prosperity initiative under UN-Habitat. The methodology development is at advanced stages with a full database compiled and expanding to several other countries. In our view (UN-Habitat), this indicator should be Tier II. The current method of computation is described below;

Methods for Computation of the Proposed Indicator:

The method to estimate the area of public space is based on three steps: a) spatial analysis to delimit the built-up area of the city; b) estimation of the total open public space and; c) estimation of the total area allocated to streets.

- a. *Spatial analysis to delimit the built-up area.* Delimit the built-up area of the urban agglomeration and calculate the total area (square kilometres). Land use maps, inventories to be locally generated to identify public spaces if possible complemented by fieldwork.
- b. *Computation of total area of open public space.* Map and calculate the total areas of open public space within the defined urban boundaries based on the built-up area. The inventory of open public spaces is digitalized and vectorised using GIS software to allow computation of surfaces. The total of open public area is divided by the total built-up area of the city to obtain the proportion of land allocated to public spaces.
- c. *Estimation of the land allocated to streets.* Calculation of the total area allocated to streets based on sampling techniques with a random sample of 10 hectares' locales is selected out of a complete listing of the all hectares locales that form the city, using the built-up area definition indicated above.
 - The sampling relies on a **Halton Sequence of coordinates** that, when repeated, always selects the same points (see figure 1).

Figure 1: The spatial distribution of randomly selected 10-hectare locales in an area of Addis Ababa, Ethiopia, built between 1990 and 2012 (left); and the analysis of a 10-hectare locale in Paris, France (right).



- **Locales** are defined as a set of city blocks surrounded by streets, and bounded by the medians of all blocks that intersect the randomly selected 10-hectare circle (see figure 1). Blocks are considered built-up if more than half of the block is built-up.
- The **share of the land in streets** in the locale is then calculated as the **ratio** of the area of the locale in streets and boulevards and the total built-up area in the locale.
- The **share of the land occupied streets** in the locale is then calculated as the **ratio** of the area of the locale occupied by streets and boulevards and the total built-up area in the locale.
- The average share of land in streets in a given city is then calculated by sampling more and more locales until the **variance between the shares of land in streets declines below an agreed-upon value**. Using this stopping rule, it becomes possible to obtain a statistically reliable average value.⁴⁵

$$POPS=100 \left[\frac{\text{Total surface of Open public space} + \text{Total surface of land allocated to streets}}{\text{Total surface of built area}} \right]$$

Target Number 11.7

Indicator Number and Name: 11.7.2 Proportion of persons' victim of physical or sexual harassment, by sex, age, disability status and place of occurrence, in the previous 12 months

Agency: UNODC

Has work for the development of this indicator begun?

Yes.

Following the First Global Meeting of National Focal Points of the United Nations Survey of Crime Trends and Operations of the Criminal Justice System (UN-CTS), held in Vienna on 9-11 May 2016 (78 participants from 44 countries), work has started on methodological guidelines to produce all SDG indicators based on Victimization Surveys (VS) or similar tools. In this framework, a review of national practices to produce SDG indicators based on VS was undertaken. As part of this exercise, information on national experiences to collect data on physical and/or sexual harassment has also been collected.

Who are the entities, including national and international experts, directly involved and consulted in developing the methodology/and or data collection tools?

The network of UN-CTS National Focal Points will be directly involved in developing and testing the data collection methodology. This network is formed of national representatives - appointed by Member States – from either National Statistical Offices or other government agencies directly involved in the production and dissemination of statistical data on crime and criminal justice. Other international agencies (incl. UN-Habitat, UN Women, UNFPA, WHO, UIS-UNESCO) and individual experts will also be involved.

What is the involvement of or how do you plan to involve National Statistical Systems in the development of the methodology?

Through the UN-CTS Focal Point Network, a group of volunteer countries will be directly involved in developing the methodology. The involvement of National Statistical Offices with experience in conducting Victimization Surveys (or similar surveys) will be actively encouraged.

Please briefly describe the process of developing the methodology for the indicator

Three steps are envisaged:

1. On the basis of the International Classification of Crime for Statistical Purposes (ICCS), develop an operational definition of physical and sexual harassment. While harassment involves behaviours meant to intimidate or offend their victims, it is necessary to identify more precisely the set of behaviours and their circumstances to be considered as harassment.
2. test possible set of questions to investigate harassment in a number of countries and analyse results
3. based on testing results, agree on a survey module on physical and/or sexual harassment to be included in victimisation surveys or similar tools.

Please indicate new international standards that will need to be proposed and approved by an intergovernmental process (such as UNSC) for this methodology.

The new international standard will include a survey module and related methodological guidelines. The review and endorsement by the UN-CTS Focal Point Network is envisaged.

When do you expect the methodological work on this indicator to be completed?

Subject to the availability of financial resources, the methodological work on the indicator is expected to be completed by the end of 2018.

Are data and metadata already being collected from the National Statistical System for one or more components of this indicator?

Yes.

If yes, please describe:

As described above, an ad-hoc collection of national practices was conducted, also with assistance from the UNODC-INEGI Centre of Excellence on Crime Statistics.

How do you plan to collect the data?

The data will be collected through the annual data collection on crime and criminal justice (UN-CTS), currently under review to include SDG indicators.

If the indicator involves multiple components from different data sources, please describe how each individual component of the indicator will be collected here.

Not applicable.

With what frequency is data expected to be collected?

The UN-CTS is implemented annually, though periodicity of national data is highly variable.

Is there a process of data validation by countries in place or planned for this indicator?

Yes

If yes, please briefly describe:

UNODC has an established policy to ask Member States to validate the compiled data through their identified national institutions. Comments received from Member States if any are dealt with and resolved through one to one communication with the responsible entities in the Member States before data are published.

Target number: 11.a

Indicator Number and Name: Indicator 11.a.1: Proportion of population living in cities that implement urban and regional development plans integrating population projections and resource needs, by size of city

Agency: UN-Habitat

Has work for the development of this indicator begun? Yes

Who are the entities, including national and international experts, directly involved and consulted in developing the methodology/and or data collection tools?

"Initial consultations were held between the Statistical Unit of UN Habitat and the Regional and Metropolitan Planning Unit of UN Habitat, where National Urban Policies (development, implementation) are being monitored. A draft work plan is being worked on to facilitate a larger stakeholder engagement on the refinement of the indicator. Further development of the methodology for Indicator 11.a.1 will also include expanding the repository of data collection tools, with the aim of the finalization of a fully measurable and agreed upon indicator framework. Several organizations and individuals with expertise in the areas on National and Regional Urban Policy will be invited to form an expert group to refine the proposed methodology and proposed methods.

Already strong existing organizational partnerships exist between UN Habitat, OECD, and Cities Alliance in the area of National Urban Policy. The partnership aims to coordinate work on National Urban Policy in order to capitalize on the strengths of each organization. Other organizations participating in dialogues on National Urban Policy include UNECE, UNECA, and UNCRD. Additional national and international experts on National and Regional Urban Policy will be drawn from the pool of 20 experts on National Urban Policy (nominated by UN member states and other international organizations) of the Policy Unit 3 on National Urban Policies, which was gathered in order to support the development of a knowledge base on National Urban Policies for the United Nations Conference on Housing and Sustainable Urban Development (Habitat III).

Other organizations leading in the development of this indicator methodology, such as UNFPA, will also draw on their networks in order to include in the group of experts those who have specialized interest in the indicator qualifiers; responds to population dynamics, ensures balanced regional and territorial development, and increase local fiscal space.

These existing partnership networks will be used in order to gather experts in the field of urban policy to meet for two Expert Group Meetings (EGM), one initial virtual meeting and one face-to-face EGM, both which will be used to refine and validate the proposed methodologies and methods."

What is the involvement of or how do you plan to involve National Statistical Systems in the development of the methodology?

The proposed work plan for the development of this methodology includes the formation of an expert group which will be crucial in the refinement of the methodological approach for this indicator. The team of experts will include invitations from representatives of selected National Statistical Agencies with a regional representation. This will ensure that their inputs to the methodological framework are captured, in addition to assessing the feasibility/suitability/efficiency to implement the indicator from the perspective of National Statistical agencies. In addition, the partners will organize regional

workshops, where all national statistical agencies will be trained on the proposed methodology for data collection and reporting on this indicator. Where funds allow, specific in-country missions to support National Statistical Agencies will be undertaken, especially where UN Habitat already has ongoing projects. Such countries will then become centres of learning or model countries for other countries in the regions in implementing and monitoring on indicator 11. a.1.

Please briefly describe the process of developing the methodology for the indicator

"The final process of methodological development for this indicator will be based on a work plan developed and agreed upon by UN Habitat, UNFPA, and other participating organizations. The current work plan outlines two key milestones in the development of the methodology: one initial virtual EGM followed by one face-to-face EGM. The following key activities will be undertaken:

- Proposed work plan validated by participating organizations
- Expert group list finalized and experts invited to participate in expert group
- Virtual EGM held to develop initial draft of methodological framework
- Initial draft of methodology developed in partnership with partner organizations and shared with the expert group in order to gather feedback
- Based on feedback, a second draft of the methodological framework shared with expert group •
Face-to-face EGM to finalize and validate methods and methodological framework
- Methodology finalized and submitted to statistical commission.
- Indicator training materials developed and disseminated through workshops, in-country advisory missions, etc."

Please indicate new international standards that will need to be proposed and approved by an intergovernmental process (such as UNSC) for this methodology.

"The indicator is premised on a checklist of qualifiers that need to be fulfilled in order to assess the level of implementation/development of National Urban Policies. A tight methodology using scorecards has been proposed as an initial starting point, and two EGMs are expected to improve on its suitability and appropriateness. Furthermore, an objective methodology for assessing and compiling of the final scores is proposed, which will involve sampling and aggregating scores from various experts on the performance of the National Urban Policies. Finally, UN Habitat has developed a global sample of cities selected from a universe of cities with global representations. This sample is derived from a national sample of representative cities that will be used for reporting city performance at the national level/for all countries.

Briefly, the methodology incorporates a policy evaluation framework that assesses and tracks progress on the extent to which national urban policy or regional development plans are being developed and implemented and satisfy the following criteria as qualifiers:

- a) responds to population dynamics
- b) ensures balanced regional and territorial development
- c) Increase local fiscal space

This process indicator places particular emphasis on the aspect of national and regional development planning that support positive economic, social and environmental links between urban, peri-urban and rural areas.

The method to quantify this indicator is based on policy analysis evaluation that can be supported by adopted policies, conventions, laws, government programs, and other initiatives that comprise

of national/regional urban policy.

A National /Regional Urban Policy is broadly defined as a coherent set of decisions derived through a deliberate government-led process of coordinating and rallying various actors for a common vision and goal that will promote more transformative, productive, inclusive and resilient urban development for the long term. This standard definition will be extended and adapted to country context and may include where applicable terms such as National Urban Plan, Frameworks, Strategies, etc. as long as they are aligned with the above qualifiers. The policy analysis evaluation will consider the following tools: baseline spatial data mapping, benchmarking, surveys, scorecard, performance monitoring and reporting, gap and content analysis."

When do you expect the methodological work on this indicator to be completed?

The initial draft of methodological work on this indicator will be completed by mid-September and submitted to the statistical commission thereafter. Any feedback will then be incorporated and the methodology finalized. A full work plan that has been jointly developed by UN Habitat and UNFPA can be submitted on request.

Are data and metadata already being collected from the National Statistical System for one or more components of this indicator?

Yes

If yes, please describe:

Baseline data for this indicator is already being collected both by UN Habitat as part of the national urban policy reviews and City prosperity initiative. In addition, UNFPA also has been collecting data on policies that reflect population projections. UN Habitat currently is finalizing a global database on National Urban Policy which includes available policy information on National Urban Policy for all countries globally. In addition, UN Habitat's City Prosperity Initiative has collected city level data over the past 5 years which can be used in order to inform the qualifiers proposed for this indicator. Data for many countries is sufficient in order to be representative not just of city level trends, but also national level urbanization trends.

How do you plan to collect the data?

"Send questionnaire(s) to country, Obtain data directly from country database/website, Joint survey/compilation with national agency and international entity, • Official documents such as National Urban Plan, Frameworks, Strategies, etc. available in national or regional administrations. "

If the indicator involves multiple components from different data sources, please describe how each individual component of the indicator will be collected here.

"The indicator involves the review of National and Regional Urban Policies which will be collected directly from each country. The alignment of the policy with the proposed indicators will then be assessed. To reduce the bias of subjectivity in the overall assessment, independent policy evaluation will be undertaken by several evaluators.

With initial support of UN-Habitat and UNFPA, other UN Agencies and partners, the method to calculate this indicator will be further developed, piloted and rolled out at country level. In order to maintain the objectivity and comparability in the policy analysis, four categories of assessment will be used for each qualifier (outlined further in the proposed metadata). These categories correspond to a progressive evaluation of the extent that national and regional policies and plans integrate positive elements that contribute to the realization of the Target. Further refinement of these 5 categories will be undertaken as necessary."

With what frequency is data expected to be collected?

Data is expected to be updated every year, based on the new data that becomes available. However, global reporting will be after every two years to allow for measuring meaningful changes.

Is there a process of data validation by countries in place or planned for this indicator?

Yes

If yes, please briefly describe:

During the planned further refinement of the methodology with participating organizations and the expert group, a process of data validation will be developed and put in place. This will be documented in training manuals which will be disseminated to all national statistical agencies and relevant government departments.

If you have any additional comments that you believe would be helpful to IAEG-SDG members in analysing the work plan and methodological development of the indicator, please provide them here:

"This indicator is based on the notion that the development and implementation of National Urban Policies should support participation, partnership, cooperation and coordination of actors as well as facilitate dialogue.

National Urban Policy (NUP) and Regional Development Plans (RDP) promote coordinated and connected urban development. A coordinated effort from government through a NUP or RDP provides the best opportunity for achieving sustainable urbanization and balanced territorial development by linking sectorial policies, connecting national, regional and local government policies, strengthening urban, peri-urban and rural links through balanced territorial development.

This indicator provides a good barometer on global progress on sustainable national urban policies. It serves as gap analysis to support policy recommendations. The indicator can identify good practices and policies among countries that can promote partnership and cooperation between all stakeholders. This indicator is both process oriented and aspirational and has the potential to support the validation of Goal 11 and other SDGs indicators with an urban component. The indicator has the ability to be applicable at multi jurisdictions levels, i.e. covering a number of areas while taking care of urban challenges in a more integrated national manner.

The indicator has a strong connection to the target, addressing the fundamental spatial and territorial aspects of national urban policy in the context of urban, peri-urban and rural areas.

This indicator epitomises the universality tenet and spirit of the SDGs. It is clearly suitable for all countries and regions and can be disaggregated and/or aggregated by areas of development as explained in the methodology section of this metadata. The indicator will be suitable to assess commitment to address urban policy related challenges and respond to the opportunities that urbanization brings. It clearly responds to Goal 11 harnessing the power of urbanisation for the common good. The indicator is strongly connected to other SDGs goals and targets.

UN-Habitat had undertaken a comprehensive review of urban policies and the methodology used could form the basis for the Global State of Urban Policy and Scorecard to be published every two years. Based on the baseline developed by UN-Habitat, it would be quite doable to routinely assess the status of national urban policies and ascertain progress made by countries to develop and implement policies based on agreed qualifiers. The work will benefit from various on-going initiatives of policies review and diagnostics undertaken by OECD, UN-Habitat and World Bank. Further methodological work would be needed to identify a list of criteria that have to be satisfied in order to attribute a value to the relevant development-oriented policy (i.e. policies supporting job creation, innovation, land-use efficiency, public space, etc.).

Policy Connections:

This Indicator is related to several Goals and Targets, particularly the following:

- Goal1: Poverty Eradication, targets 1.4 and 1.5: land tenure security and resilience
- Goal2: Food Security, Nutrition and Agriculture, targets 2.3 and 2.a: land tenure security and urban- rural linkages
- Goal3: Gender, target 5.2: safety and 5.a ownership and control over land
- Goal6: Water, targets 6.1 and 6.2: access to drinking water and sanitation
- Goal7: Energy, targets 7.2 and 7.3: access to renewable energy and energy efficiency
- Goal8: Economic Growth and Employment, targets 8.3, 8.5 and 8.6: job creation, decent work and youth unemployment
- Goal9: Infrastructure and Industrialization, targets 9.1, 9.4 and 9.a: access to and upgrading and financing infrastructure
- Goal10: Reduce inequality – target 10.4 discriminatory laws
- Goal12: Sustainable Consumption and Production, target 12.5: waste management
- Goal13: Climate Change, target 13.1: resilience and adaptive capacity; 13.b capacity for effective climate change-related planning and management
- Goal15: On terrestrial ecosystems; 15.9 By 2020, integrate ecosystem and biodiversity values into national and local planning, development processes,
- Goal16: Peaceful Societies and Inclusive Institutions, targets 16.7 and 16.a: governmental subsidiarity and institutional capacity building, 17.b non-discriminatory laws and policies for sustainable development
- Goal17: on means of implementation and partnership for sustainable development; 17.14 Policy coherence for sustainable development; 17.17 Effective public, public-private and civil society partnerships, building on the experience and resourcing strategies of partnerships"

Target number: 11.b

Indicator Number and Name: "11. b.1: Proportion of local governments that adopt and implement local disaster risk reduction strategies in line with the Sendai Framework for Disaster Risk Reduction 2015-2030"

Agency: UNISDR

Has work for the development of this indicator begun? Yes

Who are the entities, including national and international experts, directly involved and consulted in developing the methodology/and or data collection tools?

"Open-ended intergovernmental expert working group on indicators and terminology (OEIWG) [A/RES/69/284], comprising experts nominated by States, UN agencies and relevant stakeholders, has proposed possible indicators to measure global progress in the implementation of the Sendai Framework. The work of the OEIWG shall be completed by December 2016 and its report submitted to the General Assembly for consideration. UNISDR, as the Secretariat for the OEIWG, supports deliberation of Member States by producing technical notes addressing critical issues, including feasibility, computation methodology, data availability etc.

UNISDR Scientific and Technical Advisory Group (STAG) has provided the OEIWG with technical recommendations.

(Member List: https://www.unisdr.org/files/workspace/7935_stagmembers.pdf)"

What is the involvement of or how do you plan to involve National Statistical Systems in the development of the methodology?

"In most countries national disaster loss databases are established and managed by special purpose agencies including national disaster agencies, civil protection agencies, and meteorological agencies, and disaster data is collected by line ministries.

Therefore, it is essential for national statistical offices (NSOs) to closely collaborate with such agencies and line ministries in charge of targeted data."

Please briefly describe the process of developing the methodology for the indicator

"The proposed indicators were reviewed and examined by other UN agencies and submitted to the IAEG process in early-July 2015. Then in late- July 2015, those indicators were again reviewed by the Expert Group Meeting, organized by UNISDR consisting of more than 60 experts from UN system, scientific and academic organizations, civil sector and private sector and submitted and examined by the Member States in the OEIWG.

So far two sessions of the OEIWG were held, in September 2015 and February 2016, where Member States were deliberating proposed indicators and terminology. Additional consultation was done in June 2016, and is planned for convergence in the work in advance of the third session of the OEIWG in November 2016. UNISDR, as a secretariat for the OEIWG, has supported deliberation of Member States in collaboration with other UN agencies and academia. Related information and documents can be found on the web:

<http://www.preventionweb.net/drr-framework/open-ended-working-group/>"

Please indicate new international standards that will need to be proposed and approved by an intergovernmental process (such as UNSC) for this methodology.

"As the Sendai Framework stipulates, any scales and types of disasters should be addressed.

The quantitative indicators should measure quality, introducing increment measurements for achievement judged by necessary criteria stipulated in the Sendai Framework.

More information can be found in the document prepared for the Second Inter-Sessional Informal consultations of the Chair (20-21 June 2016):

<http://www.preventionweb.net/documents/oiewg/Technical%20Collection%20of%20Concept%20Notes%20on%20Indicators.pdf>

When do you expect the methodological work on this indicator to be completed?

The OEIWG will complete discussion by December 2016

Are data and metadata already being collected from the National Statistical System for one or more components of this indicator?

No

When do you expect work to begin on developing a methodology and with which partners will your organisation work?

"The OEIWG is currently developing indicators to measure global progress in the implementation of the Sendai Framework, which will eventually be SDG indicators.

We closely work with Members of the OEIWG, with which we expect NSO must have synergies and shared responsibilities to collect data."

How do you plan to collect the data?

In the past countries voluntarily provided UNISDR with data and information via online-based. We have established a comparable national disaster loss database, DesInventar (http://www.desinventar.net/index_www.html). Although the current coverage exceeds 89 countries, it is expected that by 2020 all countries will build/adjust national disaster loss databases according to the recommendations and guidelines of the OEIWG. We are planning to upgrade national disaster loss database with data collection tools using the latest technologies (cloud based, API) for disaster damage data at local level, which requires quality control and technical support for across all levels of governments. Ideally the system should use a single entity for the UN system, that can serve multiple purposes and can be used by across UN agencies.

With what frequency is data expected to be collected?

Information on DRR strategies were collected from the biennial monitoring of progress in the Hyogo Framework for Action through the multi-stakeholder review (ended in 2015). The primary purpose of the tool is to assist countries to monitor and review their progress and challenges in the implementation of disaster risk reduction. A new online Sendai Framework Monitor will begin in 2017 and the first cycle of the biennial monitoring will be in 2017-2018. The Sendai Framework monitoring will be

synchronized with SDG monitoring at the national level, to strengthen coherence and facilitate coordinated submission to ECOSOC and the UN General Assembly.

Is there a process of data validation by countries in place or planned for this indicator?

Each country takes primary responsibility in his data validation. UNISDR acts as a “clearing house” in charge of technical support, quality control, data aggregation, analysis of trends and patterns, and measurement of progress/reporting.

If you have any additional comments that you believe would be helpful to IAEG-SDG members in analysing the work plan and methodological development of the indicator, please provide them here:

"The proposed methodology and collection is currently under deliberation in the OEIWG. This proposal is mainly based on UNISDR analysis, experience, and knowledge built in the period under the Hyogo Framework for Action (2005-2015).

Reporting of the Hyogo Framework for Action (HFA) Monitor and the succeeding Sendai Monitor under development is only global database collecting DRR policy information, despite non-mandatory basis. 140+ countries undertook at least one cycle of self-assessment of progress in implementing the HFA during the period 2005-2015. (60 countries at start in 2007)."

Target number: 11.b

Indicator Number and Name: "11. b.2: Number of countries with national and local disaster risk reduction strategies"

Agency: UNISDR

Has work for the development of this indicator begun? Yes

Who are the entities, including national and international experts, directly involved and consulted in developing the methodology/and or data collection tools?

"Open-ended intergovernmental expert working group on indicators and terminology (OEIWG) [A/RES/69/284], comprising experts nominated by States, UN agencies and relevant stakeholders, has proposed possible indicators to measure global progress in the implementation of the Sendai Framework. The work of the OEIWG shall be completed by December 2016 and its report submitted to the General Assembly for consideration.

UNISDR, as the Secretariat for the OEIWG, supports deliberation of Member States by producing technical notes addressing critical issues, including feasibility, computation methodology, data availability etc.

UNISDR Scientific and Technical Advisory Group (STAG) has provided the OEIWG with technical recommendations.

(Member List: https://www.unisdr.org/files/workspace/7935_stagmembers.pdf)"

What is the involvement of or how do you plan to involve National Statistical Systems in the development of the methodology?

"In most countries national disaster loss databases are established and managed by special purpose agencies including national disaster agencies, civil protection agencies, and meteorological agencies, and disaster data is collected by line ministries.

Therefore, it is essential for national statistical offices (NSOs) to closely collaborate with such agencies and line ministries in charge of targeted data."

Please briefly describe the process of developing the methodology for the indicator

"The proposed indicators were reviewed and examined by other UN agencies and submitted to the IAEG process in early-July 2015. Then in late- July 2015, those indicators were again reviewed by the Expert Group Meeting, organized by UNISDR consisting of more than 60 experts from UN system, scientific and academic organizations, civil sector and private sector and submitted and examined by the Member States in the OEIWG.

So far two sessions of the OEIWG were held, in September 2015 and February 2016, where Member States were deliberating proposed indicators and terminology. Additional consultation was done in June 2016, and is planned for convergence in the work in advance of the third session of the OEIWG in November 2016. UNISDR, as a secretariat for the OEIWG, has supported deliberation of Member States in collaboration with other UN agencies and academia. Related information and documents can be found on the web:

<http://www.preventionweb.net/drr-framework/open-ended-working-group/>"

Please indicate new international standards that will need to be proposed and approved by an intergovernmental process (such as UNSC) for this methodology.

"As the Sendai Framework stipulates, any scales and types of disasters should be addressed.

The quantitative indicators should measure quality, introducing increment measurements for achievement judged by necessary criteria stipulated in the Sendai Framework.

More information can be found in the document prepared for the Second Inter-Sessional Informal consultations of the Chair (20-21 June 2016):

<http://www.preventionweb.net/documents/oiewg/Technical%20Collection%20of%20Concept%20Notes%20on%20Indicators.pdf>"

When do you expect the methodological work on this indicator to be completed?

The OEIWG will complete discussion by December 2016

Are data and metadata already being collected from the National Statistical System for one or more components of this indicator?

No

When do you expect work to begin on developing a methodology and with which partners will your organisation work?

"The OEIWG is currently developing indicators to measure global progress in the implementation of the Sendai Framework, which will eventually be SDG indicators.

We closely work with Members of the OEIWG, with which we expect NSO must have synergies and shared responsibilities to collect data."

How do you plan to collect the data?

In the past countries voluntarily provided UNISDR with data and information via online-based. We have established a comparable national disaster loss database, DesInventar (http://www.desinventar.net/index_www.html). Although the current coverage exceeds 89 countries, it is expected that by 2020 all countries will build/adjust national disaster loss databases according to the recommendations and guidelines of the OEIWG. We are planning to upgrade national disaster loss database with data collection tools using the latest technologies (cloud based, API) for disaster damage data at local level, which requires quality control and technical support for across all levels of governments. Ideally the system should use a single entity for the UN system, that can serve multiple purposes and can be used by across UN agencies.

If the indicator involves multiple components from different data sources, please describe how each individual component of the indicator will be collected here.

The national government in each country takes primary responsibility in data collection and reporting in collaboration within and across levels of governments.

With what frequency is data expected to be collected?

Information on DRR strategies were collected from the biennial monitoring of progress in the Hyogo Framework for Action through the multi-stakeholder review (ended in 2015). The primary purpose of the tool is to assist countries to monitor and review their progress and challenges in the implementation of disaster risk reduction. A new online Sendai Framework Monitor will begin in 2017 and the first cycle of the biennial monitoring will be in 2017-2018. The Sendai Framework monitoring will be synchronized with SDG monitoring at the national level, to strengthen coherence and facilitate coordinated submission to ECOSOC and the UN General Assembly.

Is there a process of data validation by countries in place or planned for this indicator?

Each country takes primary responsibility in his data validation. UNISDR acts as a “clearing house” in charge of technical support, quality control, data aggregation, analysis of trends and patterns, and measurement of progress/reporting.

If you have any additional comments that you believe would be helpful to IAEG-SDG members in analysing the work plan and methodological development of the indicator, please provide them here:

"The proposed methodology and collection is currently under deliberation in the OEIWG. This proposal is mainly based on UNISDR analysis, experience, and knowledge built in the period under the Hyogo Framework for Action (2005-2015).

Reporting of the Hyogo Framework for Action (HFA) Monitor and the succeeding Sendai Monitor under development is only global database collecting DRR policy information, despite non-mandatory basis. 140+ countries undertook at least one cycle of self-assessment of progress in implementing the HFA during the period 2005-2015. (60 countries at start in 2007)."

Target number: 11.c

Indicator Number and Name: “11.c.1: Proportion of financial support to the least developed countries that is allocated to the construction and retrofitting of sustainable, resilient and resource efficient buildings utilizing local materials”

Agency: UN-Habitat

Has work for the development of this work begun?

Yes, consultations and expert group meetings are planned for the next 4 months. A list of possible partners and targeted developing countries to contribute to this indicator development has been finalized.

Who are the entities, including national and international experts, directly involved and consulted in developing the methodology/and or data collection tools?

UN-Habitat will take the lead and will be inviting international experts from international selected agencies, selected national government and independent experts for the development of methodology and implementation of a global data collection system. So far statistical systems and experts from Kenya, Tanzania, Vietnam and Malawi have expressed interest in participating in the further development of this indicator”

What is the involvement of or how do you plan to involve National Statistical Systems in the development of the methodology?

“Selected countries have been invited to contribute to the pilot phase of further development of this indicator. Specifically, countries are invited to offer the platforms for pilot testing of the questions that will cover the data collection of this indicator. In addition, NSOs will support and ensure that other line ministries that will be targeted for data and methodology development are fully included in the pilot phases.”

Please briefly describe the process of developing the methodology for the indicator

“Expert group sessions as well as other consultative processes with selected national statistical systems are ongoing as a starting point to build a list of partners and contributors. Two rounds of expert groups will be undertaken—virtual and face-to-face followed by closely working with a team of experts to pilot test the agreed questions and methodology in selected countries. A work plan for the capacity building will be developed and targeted to the countries with limited capacity. Translated tools and guides in several languages will be made available. UN-Habitat will monitor compliance for agreed standards and procedures.”

Please indicate new international standards that will need to be proposed and approved by an intergovernmental process (such as UNSC) for this methodology.

This indicator requires embedding into routine data collection processes, as such the methodology will be pilot tested in selected countries using internationally acceptable standards. The results of this exercise will ensure that the methodology for guiding and collection of data for this indicator will fulfil international standards.

When do you expect the methodological work on this indicator to be completed?

August 2017

Are data and metadata already being collected from the National Statistical System for one or more components of this indicator?

No

When do you expect work to begin on developing a methodology and with which partners will your organization work?

The work on development of the methodology is already underway for this indicator. Selected UN agencies and international organizations/universities have agreed to contribute to this process. A further list of experts has been compiled.

How do you plan to collect the data?

Efforts will be made to collect the data for this indicator from routine national surveys. Hence, data for this indicator will be collected from household surveys and censuses, administrative registries, local governments and electoral offices where applicable.

If the indicator involves multiple components from different data sources, please describe how each individual component of the indicator will be collected here.

There two or three sources that need to be combined to measure this indicator and as such efforts will be made to bring together the various partners involved in tracking financial contributions, construction and employment monitoring. The indicator will be assessed from various dimensions including disaggregation by gender and ages where applicable. Detailed data on the various dimensions will hence come from various institutions. Each national government will have the primary responsibility on data collection and validation of this indicator following a programme of capacity strengthening to selected countries to ensure uniformity in the data collection processes globally. Support will be provided to countries where capacity challenges for data collection exist.

With what frequency is data expected to be collected?

Every 3 years

Is there a process of data validation by countries in place or planned for this indicator?

Yes

If yes, please briefly describe:

This indicator needs data to be collected at the city and national level, and each country will lead the responsibility for the validation of its own data, but using an internationally agreed standard and procedures. UN-Habitat will be in charge of technical support, quality assurance of data, data analysis of trends and patterns and measurement of progress.

If you have any additional comments that you believe would be helpful to IAEG-SDG members in analysing the work plan and methodological development of the indicator, please provide them here:

Not every country has a comparable national database for the various targeted dimensions for this indicator with the same level of consistency. Hence more efforts will be placed in standardizing many of these systems of reporting.