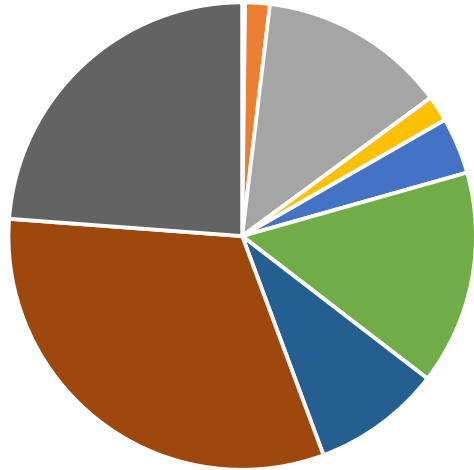




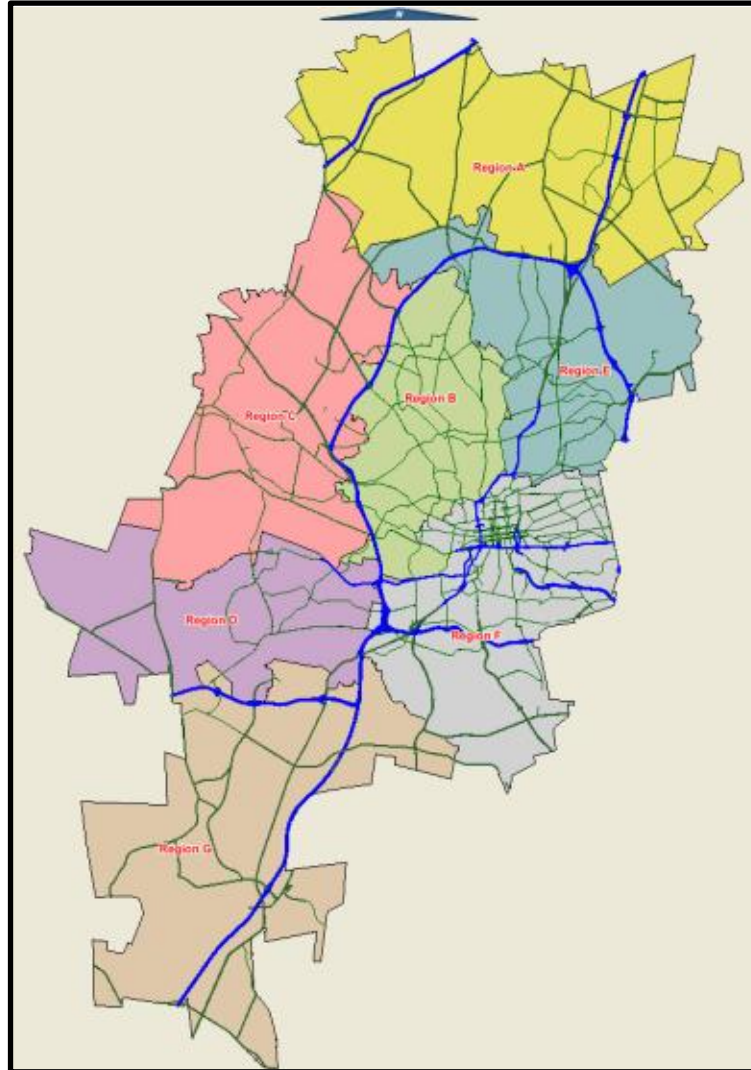
City of Johannesburg

Contextualizing Johannesburg

Sectoral share of JHB's 2014 Economic output



- Agriculture 0.2%
- Mining 1.7%
- Manufacturing 13%
- Electricity 1.8%
- Construction 3.9%
- Trade 14.8%
- Transport 8.9%
- Finance 31.8%
- Community service 23.8%

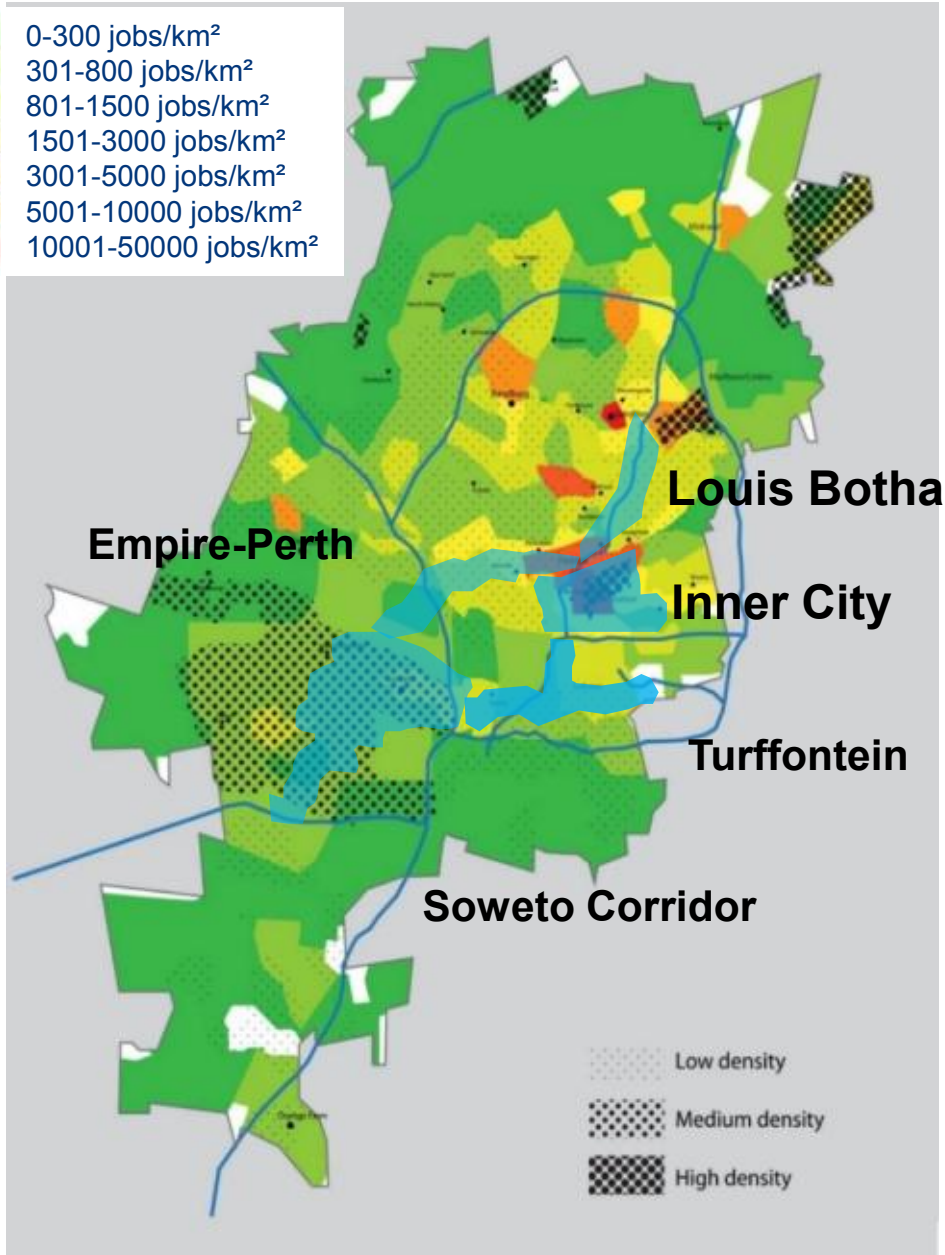


JOHANNESBURG DEMOGRAPHICS

- Total Population – 4.4 million.
- Area 1644 km²
- 36% of Gauteng population.
- 8% of national population.
- Johannesburg is growing faster than the Gauteng Region.
- COJ population increase by 38% between 2001 and 2011.



SPATIAL INEQUALITY AND THE JOB HOUSING MISMATCH



3% of the metropolitan area hosts 1/3 of the jobs

5% of the metropolitan area hosts 1/3 of the inhabitants

... the areas with the highest population concentrations are the most deprived areas in the City.

The lack of land use diversity is even more critical in deprived areas where we find mostly residential land uses.

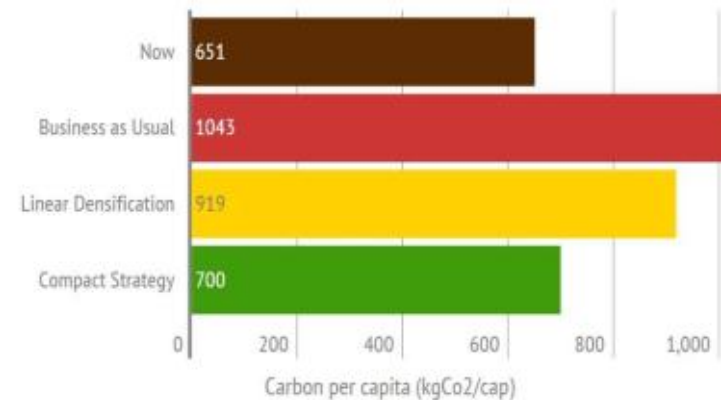
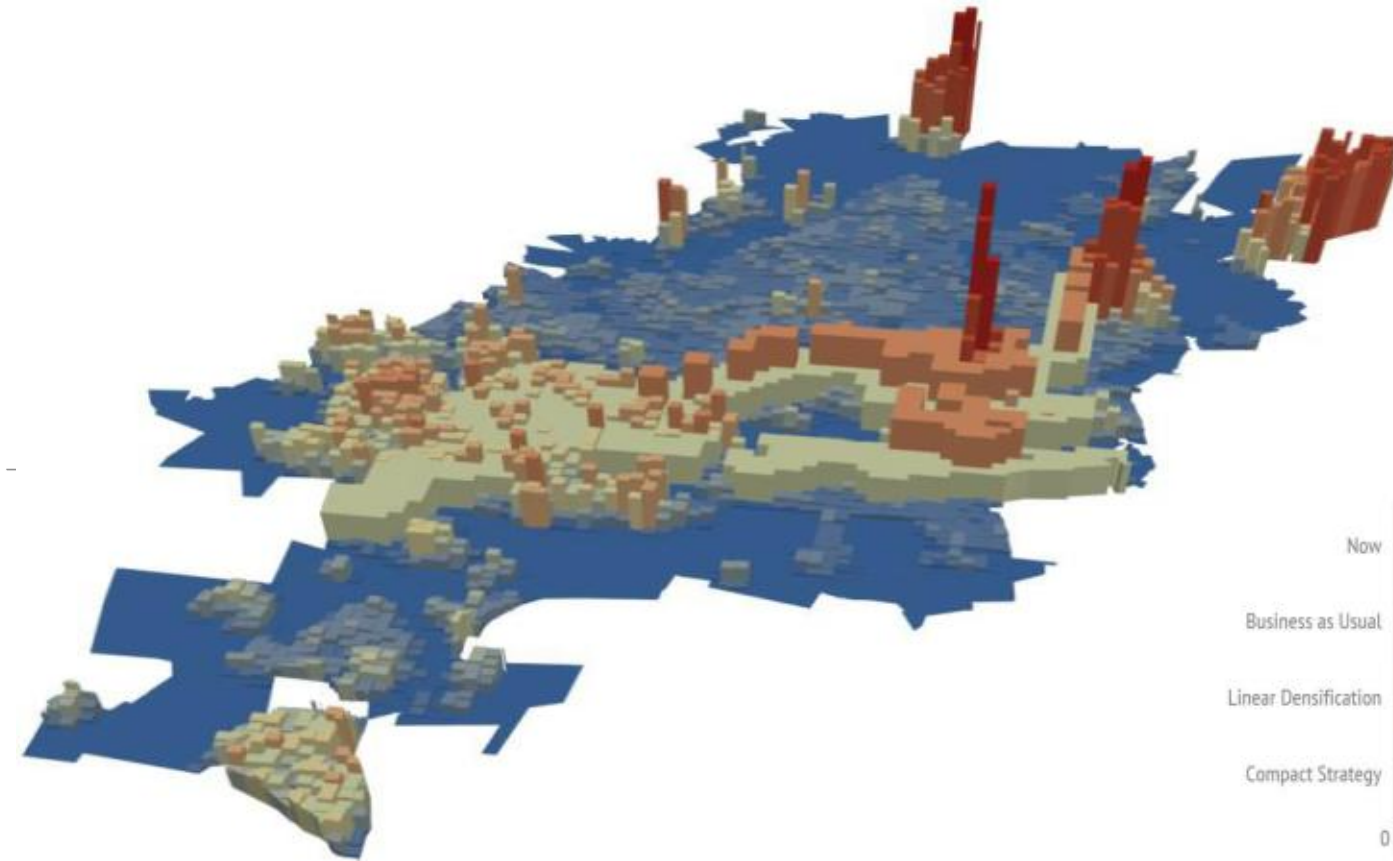
Sectors related to challenges

- Housing
- Transport
- Development Planning
- Economic growth
- Environment

Spatial Vision

Urban sprawl is contained and residential density is concentrated in priority development areas closest to transit infrastructure.

Three spheres of government, NGO's, local citizens and Private Sector .





Thank You

bit.ly/jhbsdf2040

<http://www.corridorsoffreedom.co.za/>