



METRO KIDAPAWAN WATER DISTRICT

Committed to Service, Development and Self- Reliance

VISION

MKWD ENVISIONS AN ECONOMICALLY VIABLE PUBLIC UTILITY FIRM WHOSE INDEX OF SUCCESS IS CUSTOMER SATISFACTION IN THE PROVISION OF ADEQUATE, SAFE, POTABLE, AND AFFORDABLE WATER FOR KIDAPAWAN CITY, MAKILALA, MAGPET, AND MATALAM SERVICE AREAS.

MISSION

MKWD provides cost effective services and environmentally sensitive management of water resources that is committed to service, development and self-reliance.

GOALS

MKWD aims for the protection, preservation, and sustainability of its water resources and will always adhere to sound practices in the management of the natural environment and watershed recharge areas.

QUALITY POLICY

MKWD, AS A SELF-RELIANT AND FINANCIALLY VIABLE GOVERNMENT OWNED AND CONTROLLED CORPORATION IS COMMITTED TO PROVIDE ITS CUSTOMERS WITH SAFE, ADEQUATE AND POTABLE WATER WITHIN ITS SERVICE AREA. MKWD WILL CONTINUALLY IMPROVE THE QUALITY MANAGEMENT SYSTEM WITH ITS COMMITMENT FOR COST EFFECTIVE SERVICES AND ACHIEVE CUSTOMER SATISFACTION.

TO FULLY IMPLEMENT ITS QUALITY MANAGEMENT IN WATER SUPPLY DISTRIBUTION THAT EXCEEDS THE MINIMUM REQUIREMENTS OF NATIONAL STANDARDS FOR DRINKING WATER AND OTHER WATER SUPPLY DISTRIBUTION POLICIES AND REGULATIONS, AND OTHER APPLICABLE REQUIREMENTS, MKWD WILL:

- A. MANAGE WATER QUALITY FROM CATCHMENTS TO CUSTOMER SERVICES USING **RISK BASED APPROACH**;
- B. ENSURE **DESIGNED RESPONSE PERIOD** IN ADDRESSING CUSTOMER NEEDS IN SERVICE DELIVERY;
- C. CONDUCT CONSTANT **WATER QUALITY** MONITORING ON WATER SUPPLY IN COMPLIANCE TO REGULATORY REQUIREMENTS AND TO ACHIEVE CUSTOMER SATISFACTION;
- D. **RESPOND TO INCIDENTS AND EMERGENCIES EFFECTIVELY** WITHOUT AFFECTING ITS OPERATIONS;
- E. CONTINUOUSLY **TRAIN** MANAGERS, OFFICERS AND THE ENTIRE WORKFORCE WITH REGARD TO WATER QUALITY MANAGEMENT AND SERVICES.

General Data

Service Area Population	350,000
Population Served	156,325
Percentage(%)	45.00 %
With 24-Hour Water Service	96.00 %

Total Service Connections
(Commercial, Industrial and Residential)

31,247

System Network in Kilometers (Km)

Transmission Lines	76,191
Mainline	286,901
Distribution Lines	412,680
Total	776,372

Note 01: Approximately 4x the distance of Incheon – IUTC

Note 02: About 90 Kms of pipelines are located on landslide prone areas

Water
Supply
Production
in Liters per
Second
(LPS)

Note 003:
Average
Elevation is
from 650 m to
750 m ASL

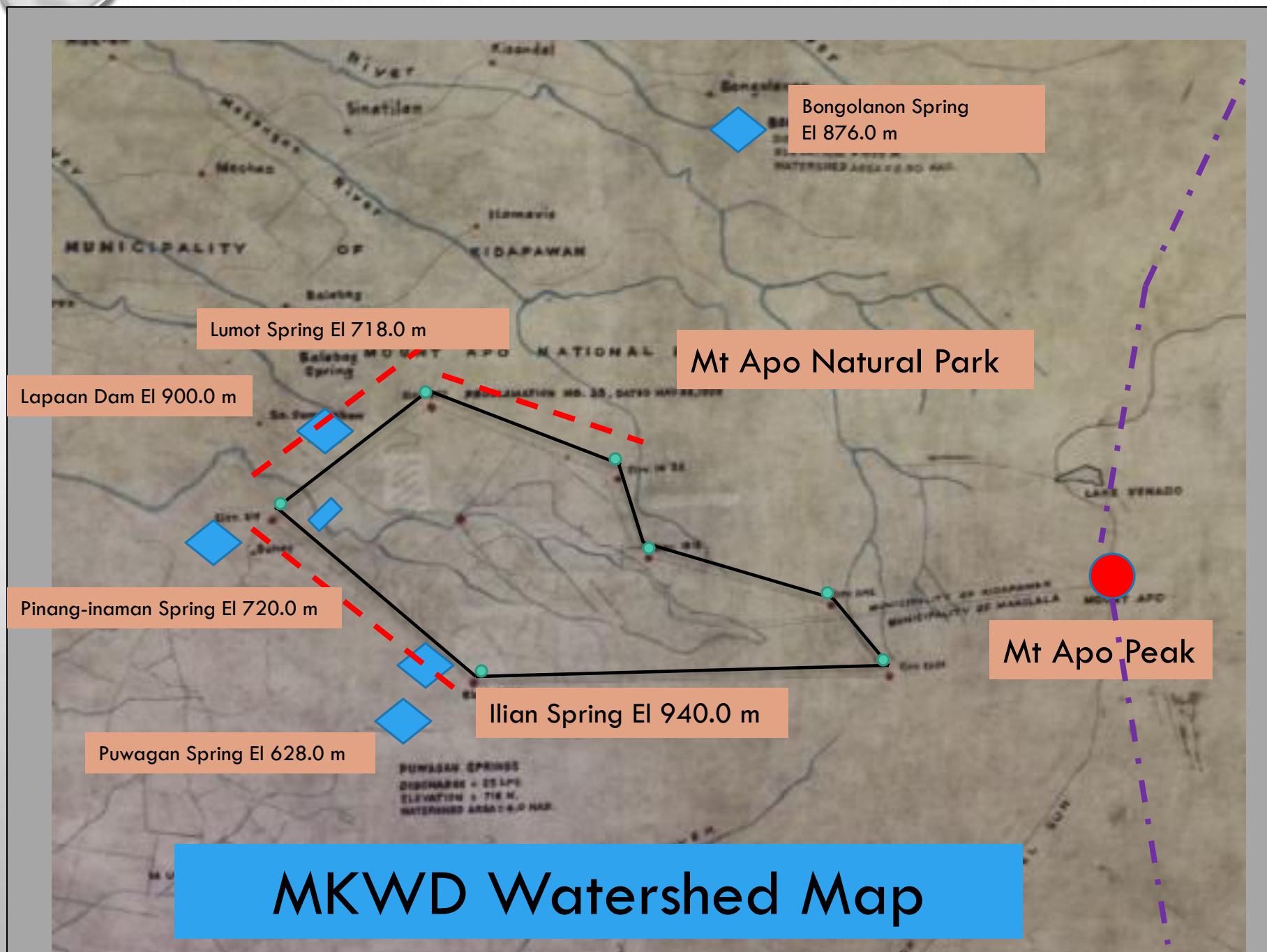
Surface Water	
Lapaan Dam 1	132
Lapaan Dam 2	180
Springs	
Lumot Spring	52
Pinang-inaman/Singkato	44
Ilian Spring	90
Bongolanon	119
Bongolanon	265
Puwagan	52
TOTAL	634

MKWD Managed Watershed Area (636 Hectares)

Saguing Watershed and Forest Reserves	625 hectares
Batasan Watershed	3 hectares
Ilian Watershed and Forest Reserves	3 hectares
Bongolanon Watershed and Forest Reserves	2 hectares
Balabag Watershed and Forest Reserves	3 hectares

Note 004:

MKWD Watershed Area is located at Mt. Apo Natural Park Area which is classified as Protected Area



IMPORTANT CHARACTERISTICS OF SAQUING RIVER WATERSHED FOREST RESERVED AREA :

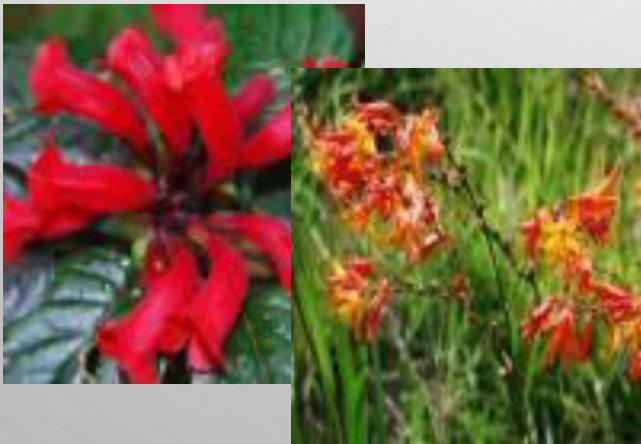
Plants

277 species

91 families

14 endemics

6 vulnerable



Fauna

Birds 145 species

5 vulnerable

Mammals 9 species

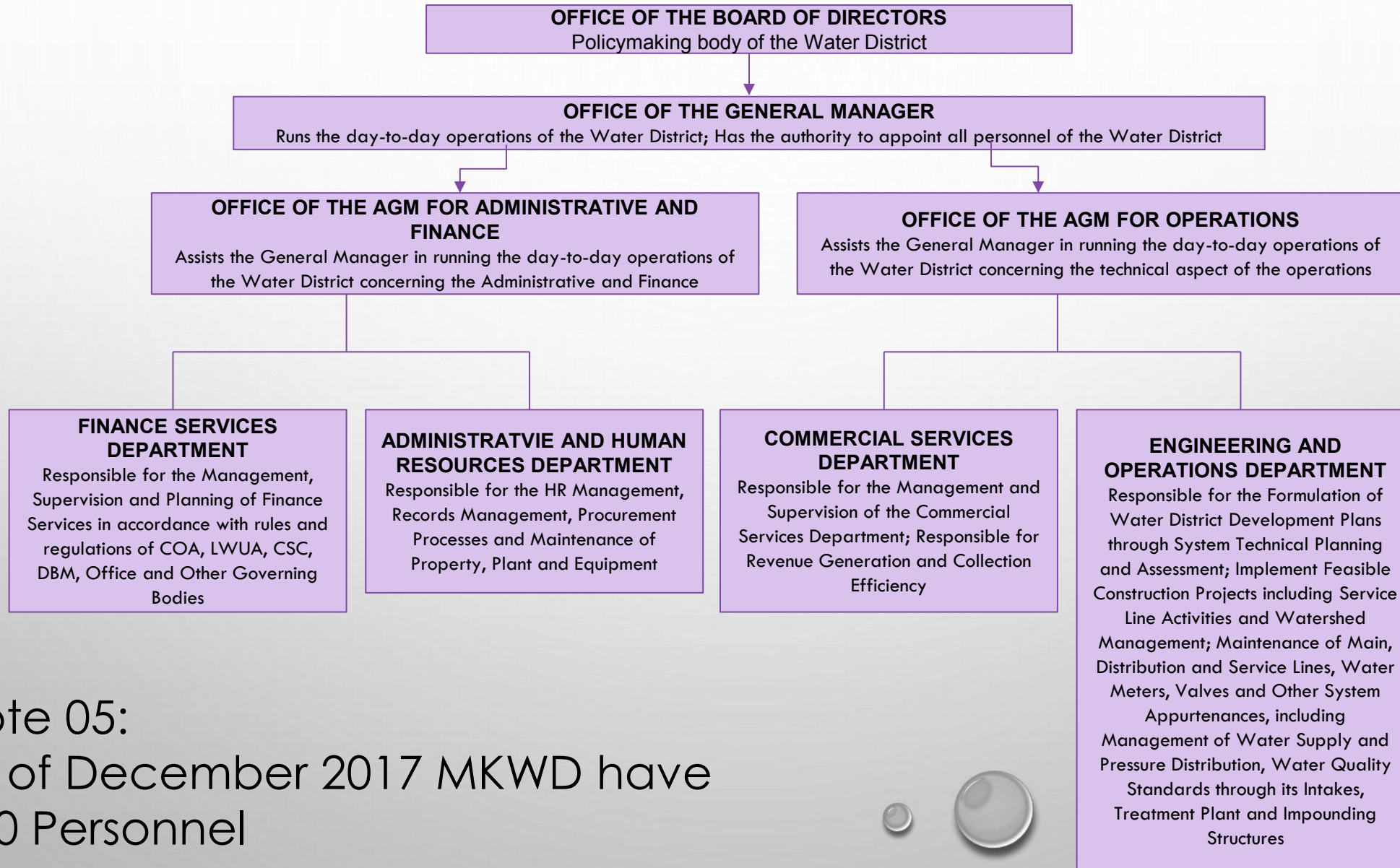
Frogs 13 species

4 vulnerable

Reptiles 4 species



Organizational Functional Chart



Note 05:
As of December 2017 MKWD have
200 Personnel



MKWD

ISO 9001:2015 Certified (Quality Management System)

Accredited Water Safety Plan (WSP) from Department of Health (DOH)

Compliant to Good Governance Requirements

Category A Water District (Top 20 in the Philippines in terms of Revenue and Service Connections)

With Integrated Watershed Management Plan (IWMP)

Top 10 of the 600+ water districts with Lowest Water Rate/Tariff in the Philippines

